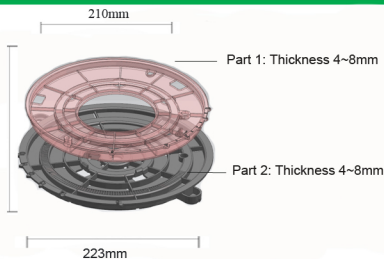


# Base Slope Corrector



**Base Slope Corrector from 0~5% in Polypropylene:**  
In Talc-filled polypropylene copolymer, black colour.

## Composition

Consists of two inclined plane assembled.

Thickness of elements=4~8mm.

## Material

Polypropylene(PP), material thickness 4mm~8mm;  
Composition 90% PP, 10% talc, UV and black masterbatch  
100% recyclable

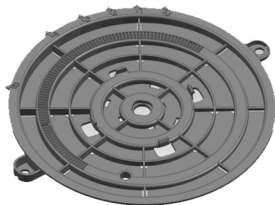
## Dimensions

Part 1 diameter 210mm, part 2 diameter 223mm  
Assembly thickness at 0%=13mm to be added to the pedestal height  
Assembly thickness at 5%=18mm to be added to the pedestal height.

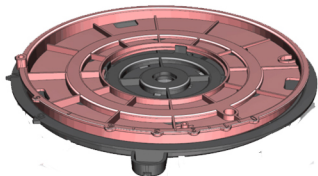
## Performance

Resisting UV rays, weather, sea salt and almost all chemicals.  
Temperature range: -40 degree celsius to +120 degree celsius.

Slope Corrector type MB-SC-02 is fixed to the bottom of pedestal and compensates for horizontal slopes from 0~ 5%, allowing a perfectly level surface above the pedestal head to be achieved.



Slope Corrector MB-SC-02 allows slopes of 0.5 / 1 / 1.5 / 2 / 2.5 / 3 / 3.5 / 4 / 4.5 / 5% to be corrected.



The slope corrector should allow the adjustment of the gradient, without the need to lift up part of the pedestals, meaning that slope corrector can be done, also with tile placed on the top of the pedestal, as this will significantly influence the speed of application.