



Profession



Honesty



Innovation



Adjustable Pedestal



Drain Channel System

Hangzhou Moonbay Industrial Co., Ltd

Ph/whatsapp: +86 176 8231 3725

Email: frank@chinamoonbay.com

Web: www.plasticpedestal.com; www.globalmoonbay.com

Add: Hangzhou, ZheJiang, China

Hangzhou Moonbay Industrial Co., Ltd



CONTENTS

COMPANY

Company	01
---------	----

PRODUCT

Adjustable Pedestal	04
---------------------	----

Utility	06
Advantage	07
Profile	09
Height Range	11
Accessory	15
Loading	28
Test	29
Certificate	30

Steel Pedestal	31
----------------	----

Tile Leveling System	33
----------------------	----

Drain Channel System	35
----------------------	----

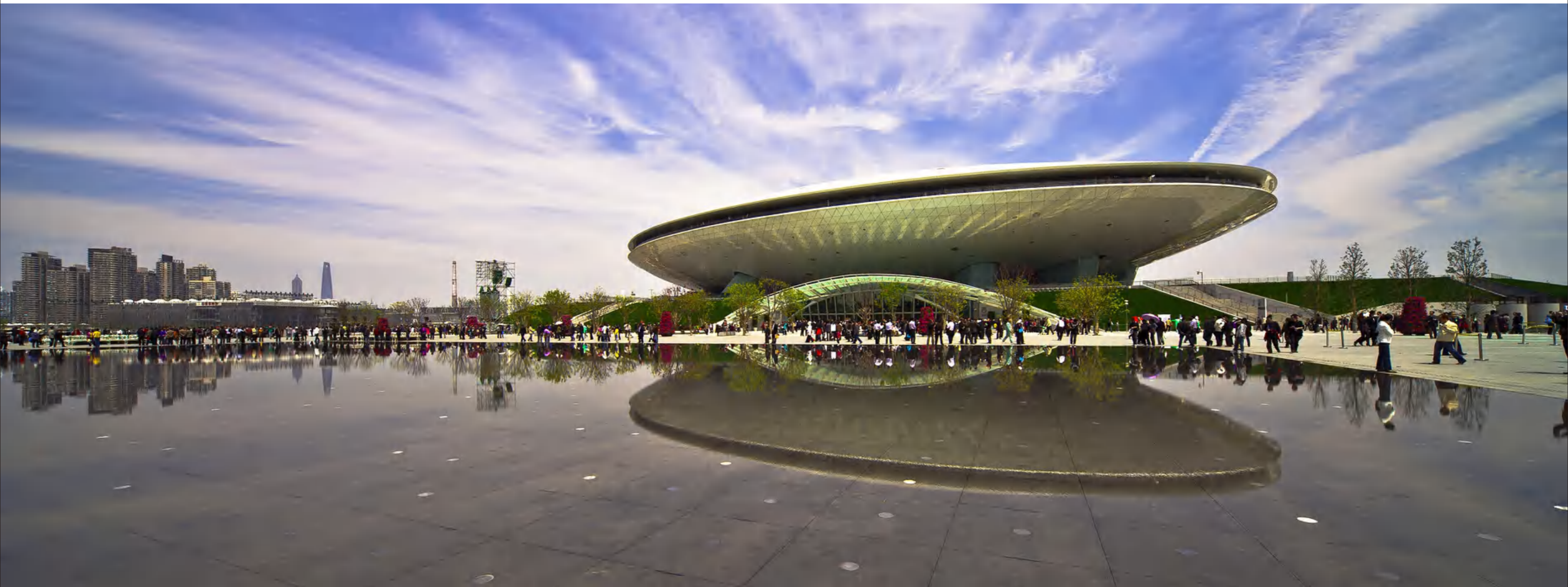
Drainage Ditch	37
Loading Classification	40
Drainage Ditch Details	41
Channel Covering	47
Accessory	49
Installation	51

Garden Edging System	53
----------------------	----

PROJECT

Project	55
---------	----

Adjustable Pedestal Project	55
Drain Channel Project	71
Garden Edging Project	83
Project Distribution Map	85



Mission: Create More Efficient And Eco-friendly Product

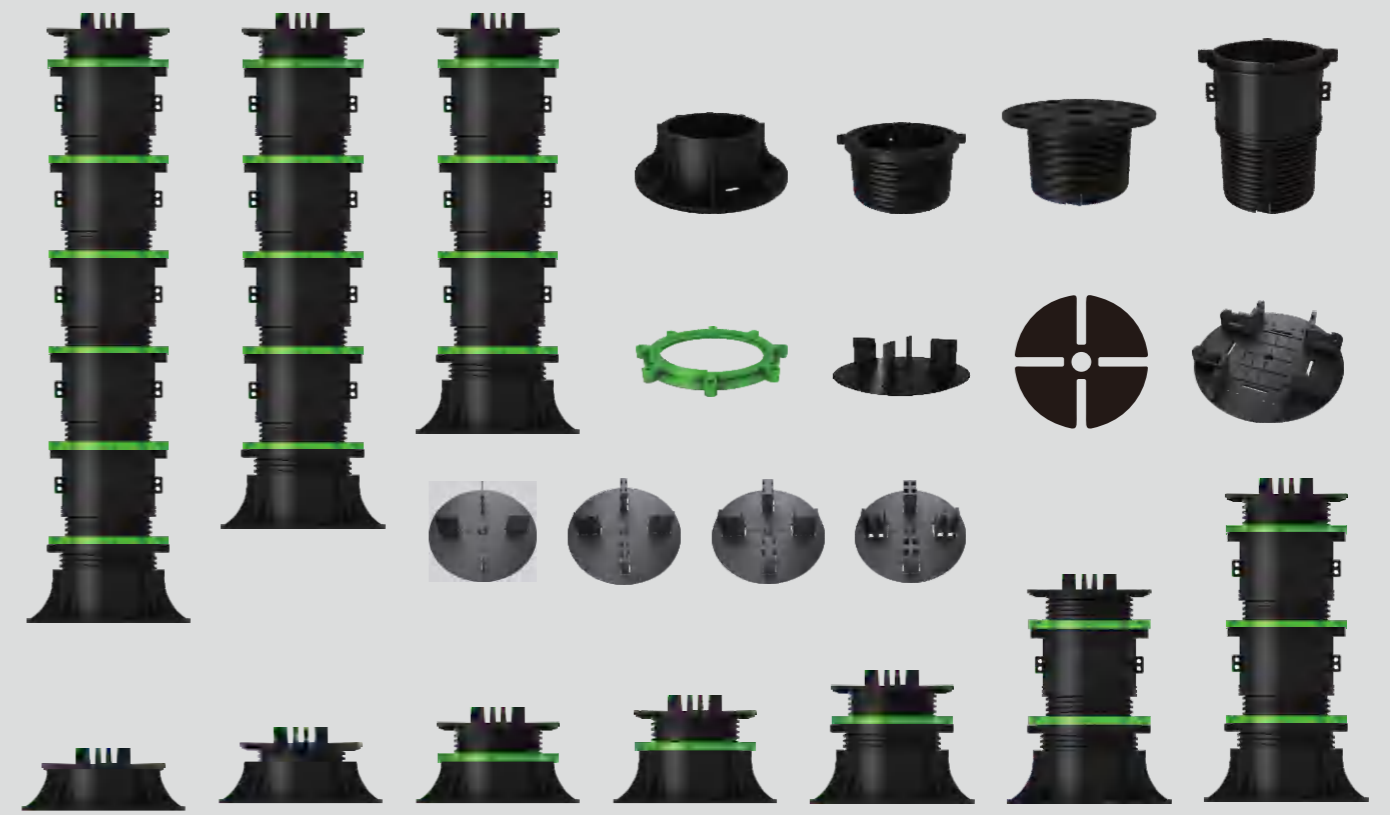
Vision: To Be The Benchmarking Enterprise In Building Material Industrial

Value: Honesty, Profession, Innovation, Optimism

Hangzhou Moonbay Industrial Co., Ltd.
Professional Adjustable Plastic Pedestal
Drain Channel and Tile Leveling System Manufacturer
Excellent and experienced teams of
develop, design, manufacture, sales and service
Pursue the management tenet of "offering the top quality
product to bring the most value for our clients "
Hot selling in Europe, Australia, America, Asia etc
ISO9001: 2008 Certificate
ISO14001: 2004 Certificate
OHSAS18001: 2007 Certificate
ASTM Anti-Fire Test
ASTM Anti-UV Aging Test
ASTM Loading Test
ASTM Material Test
CE Certificate
RoHS REPORT-SGS



Adjustable Pedestal



Moonbay adjustable plastic pedestal is made of PP, anti-UV, talc etc.
Support for outdoor terrace with any kind of material: timber decking, wpc decking, stone, ceramic, composite material, metal, fiberglass, grit, etc.
Can be placed on any stable substrate, also over insulation panels.



Utility



Fountain



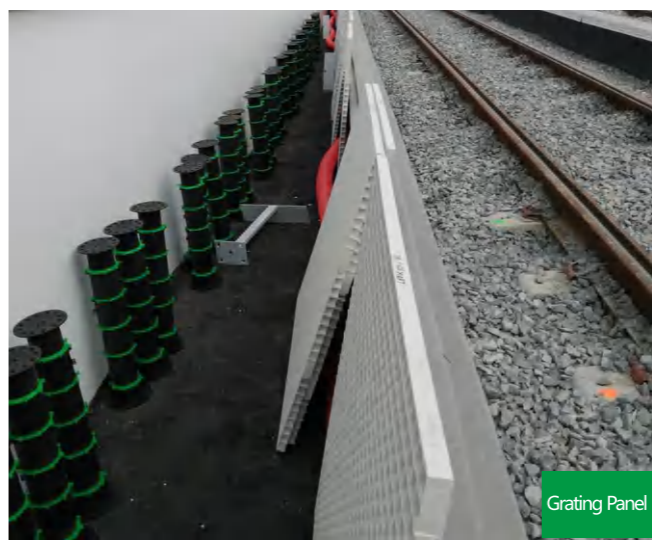
Decking



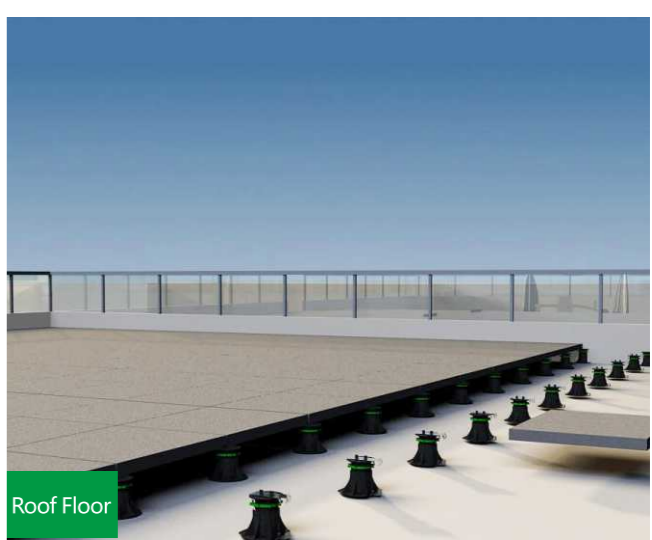
Water feature



Tiles



Grating Panel



Roof Floor



Traditional



Adjustable Paving Tile Support



Traditional

Advantage

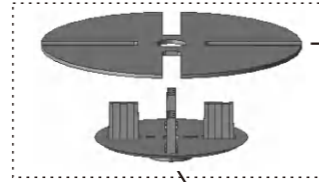
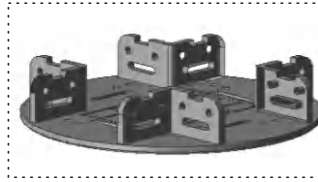
- Easy to install & light weight
- High compressive strength
- Progressive height increment
- 30 years lifetime
- Locking rings ensure rigid assembly.
- Large, soft contoured bases mitigate possible membrane damage.
- Anti-UV, and Eco-friendly
- Easily removed and re-used.

Adjustable Timber Decking Support



Joist Cradle

(40mm/50mm/60mm/80mm)
Support for any kind of substructure:
• timber batten(joists)
• composite battens
• aluminium or steel support sections
Width of the support: up to 80mm.
Fixing holes on both sides of support for mechanical fixing.

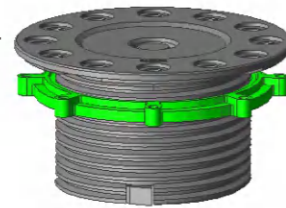


Shim

(1mm/2mm/sloped)
For use with marble, stone slabs, granite pavers, etc. for:
• added anti-slip performance
• shock and sound absorption
• compensation for stone thickness variation

Head

The head of the support is screwed directly on to the base, or on to the extender. Diameter of 150 mm, can be fitted with various components to support differing surfaces.



Spacer tabs

(2mm/3.5mm/5mm/8mm/10mm)
The head can be fitted with spacer tabs, to give the desired opening between tiles (for water drainage and ventilation).

Fix collar

Fix and lock the screws after adjustment, ensure pedestals are secured at desired heights and are easily removed when not required.

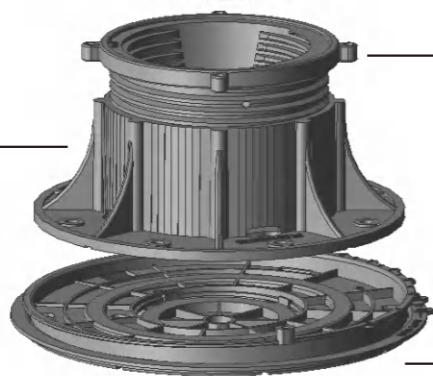


Extender

Extend and add height of adjustable pedestal
Diameter 120mm

Base

The base can be simply positioned or fixed to any substrate.



Adjustment ring

Adjustment ring
Diameter 115 mm
Screw pitch reversed
Adjust height of pedestals

Base slope corrector

Base slope corrector
Compensate slope from 0%-5%
Assembled on bottom of pedestals
Can be choose to use it or not for different installation condition



Base + Adjustment Ring

Head

Extender

Spacer Tabs
(2 / 3.5 / 5 / 8 / 10mm)

Shim
(1mm/2mm/Sloped)

15mm Extension Pad

Base slope corrector

Base rubber pads

Connecting rod

Windproof system
A Type B Type

Joist cradle
(40mm/50mm/60mm/80mm)

wood tile clip

MB-T Type



Φ 180mm

Φ 120mm

Φ 220mm

Height Range: 14-1260mm

Max Loading: 1200 kgs/pc

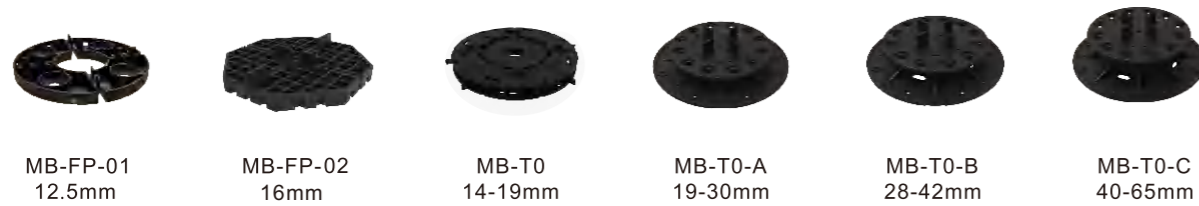
Application: Terrace, Balcony, Rooftop, Public Square, Commercial Building, Fountain, Water Feature, Decking, Garden.

Material: Polypropylene (PP)

Rating: ★★★★★

Code	MB-FP-01	MB-FP-02	MB-T0	MB-T0-A	MB-T0-B	MB-T0-C	MB-T0-D
Height Range (mm)	12.5	16	14 - 19	19 - 30	28 - 42	40 - 65	60 - 105

MB-T0-E	MB-T0-F	HMB-T1-A	HMB-T2-A	HMB-T3-A	HMB-T4-A	HMB-T5-A	HMB-T6-A
90-185	185-320	250-370	370-560	500-760	600-930	750-1100	900-1260



MB-FP-01
12.5mm

MB-FP-02
16mm

MB-T0
14-19mm

MB-T0-A
19-30mm

MB-T0-B
28-42mm

MB-T0-C
40-65mm



MB-T0-D
60-105mm

MB-T0-E
90-180mm

MB-T0-F
185-320mm

HMB-T1-A
250-370mm

HMB-T2-A
370-560mm



HMB-T3-A
500-760mm

HMB-T4-A
600-930mm

HMB-T5-A
750-1100mm

HMB-T6-A
900-1260mm

MB-K Type



Φ 220mm

Φ 160mm

Φ 260mm

Height Range: 210-1600mm

Max Loading: 1800 kgs/pc, heavy duty pedestal

Application: Terrace, Balcony, Rooftop, Exhibition Stage, Public Square, Commercial Building, Fountain, Water Feature, Decking, Garden.

Material: Polypropylene (PP)

Rating: ★★★★★

Code	MB-K0	MB-K1	MB-K2	MB-K3	MB-K4
Height Range (mm)	210-360	420-670	620-980	820-1290	1020-1600



MB-K0
210-360mm

MB-K1
420-670mm

MB-K2
620-980mm

MB-K3
820-1290mm

MB-K4
1020-1600mm

Prefabricated Pedestal



Φ 90mm

Φ 100mm

Height Range: 30-160mm

Max Loading: 600 kgs/pc, light pedestal system

Application: Outdoor Terrace, Indoor Raised Floor, Decking, Floor Heating, Balcony, Rooftop, Commercial Building, Garden.

Material: Polypropylene (PP)

Rating: ★★★★★

Code	MB-L0-A	MB-L0-B	MB-L0-C	MB-L0-D
Height Range (mm)	30-45	45-75	73-120	113-160



MB-L0-A
30-45mm



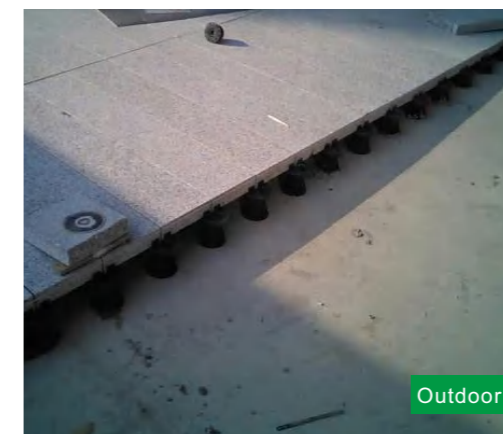
MB-L0-B
45-75mm



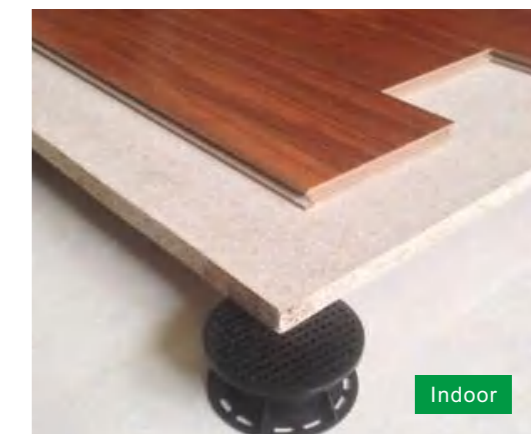
MB-L0-C
73-120mm



MB-L0-D
113-160mm



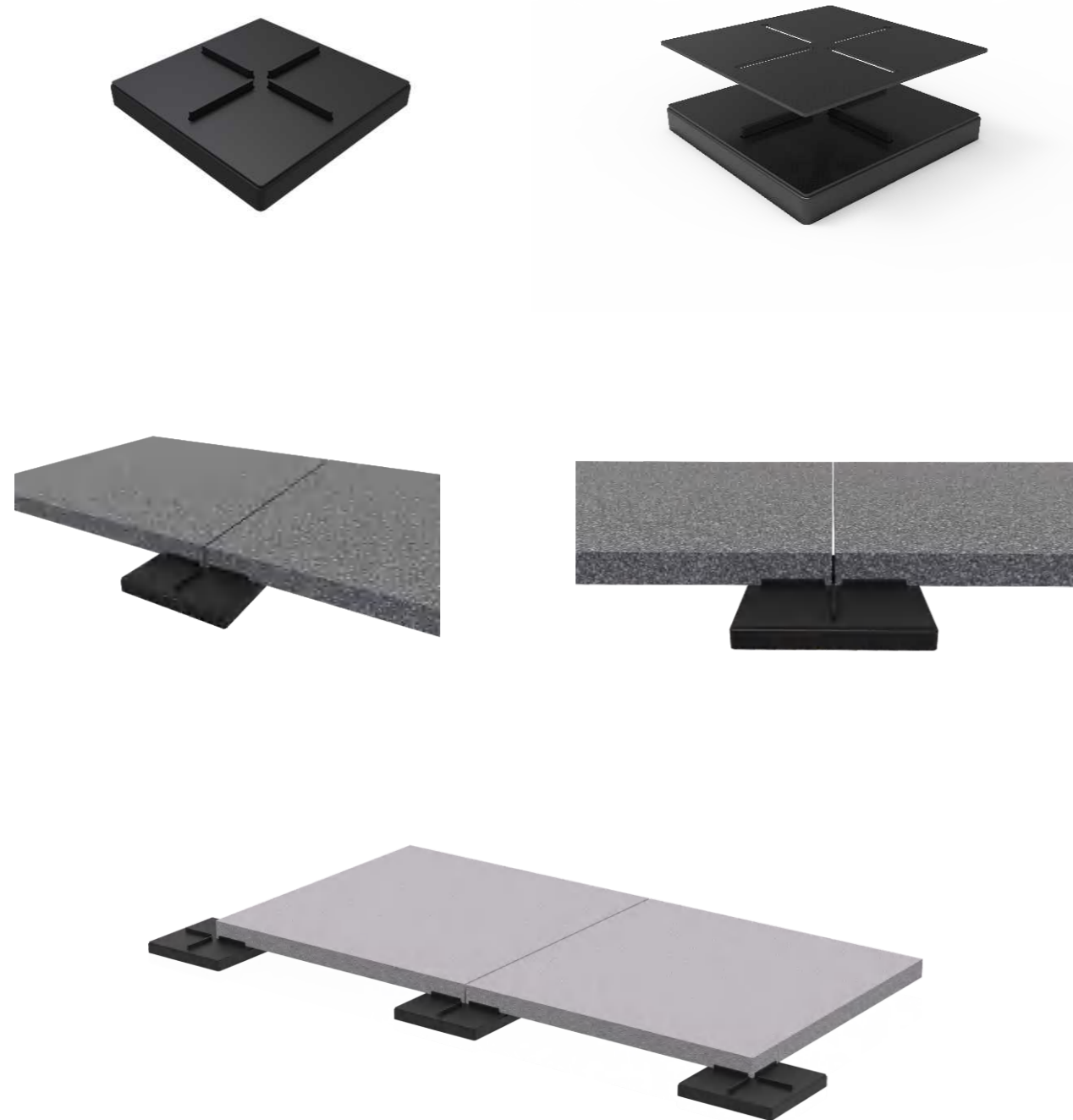
Outdoor



Indoor

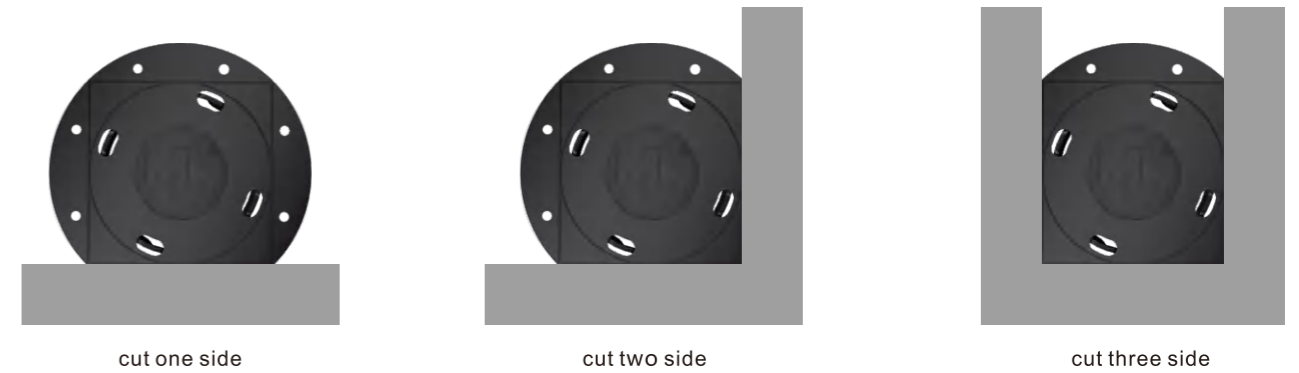
14mm Rubber Pad+Shim

The 14mm rubber pad +shim have always been the fastest and most economical solution for fixed tiles in the elevated system

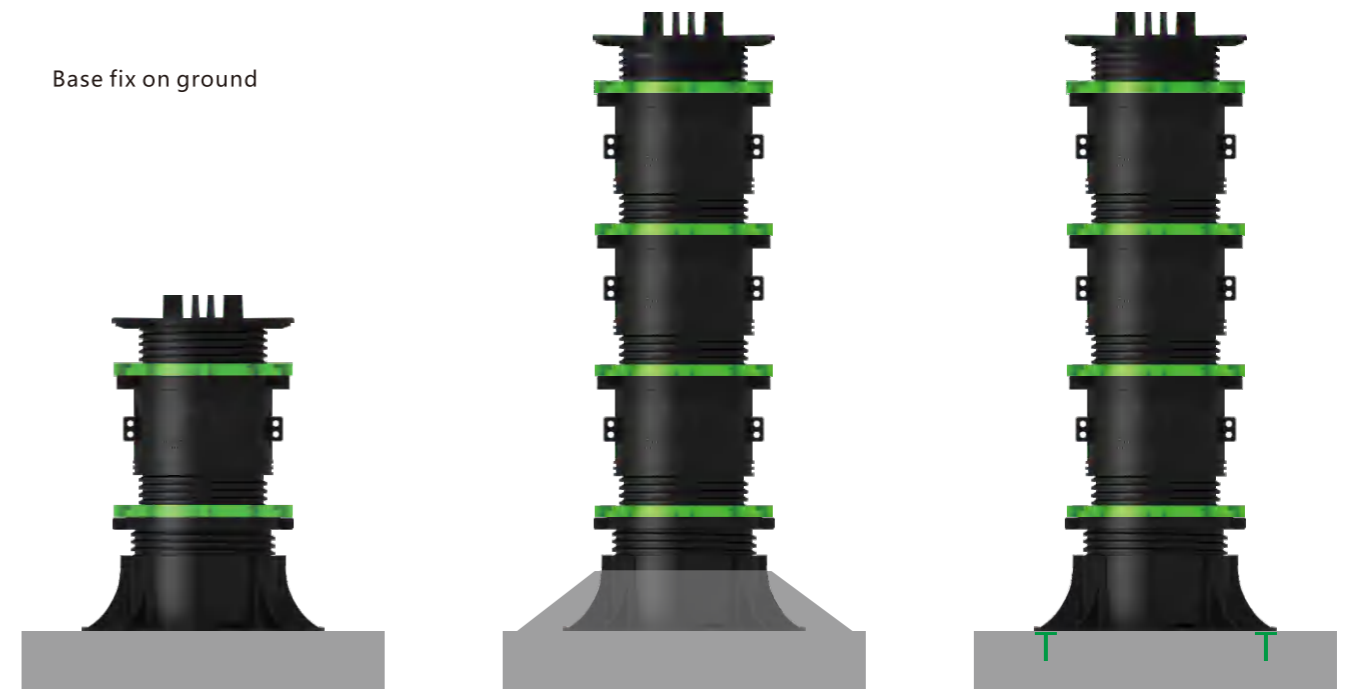


Base

Cut the base to install the pedestal on the corner



Base fix on ground



Height : $\leq 400\text{mm}$

Non-fix

Height : $> 400\text{mm}$

Method 1: concrete or glue

Height : $> 400\text{mm}$

Method 2: screws(bolts)

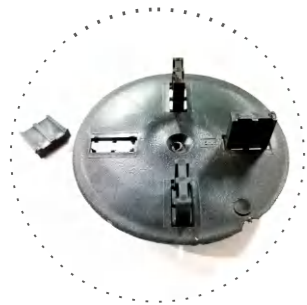
Spacer tabs



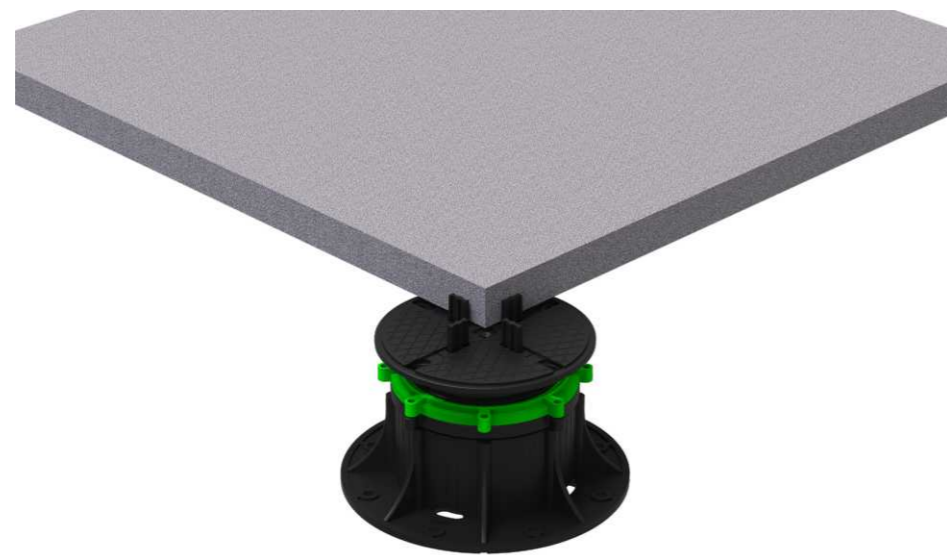
2 mm 3.5mm 5 mm 8 mm 10 mm



One tile Two tiles Three tiles Four tiles



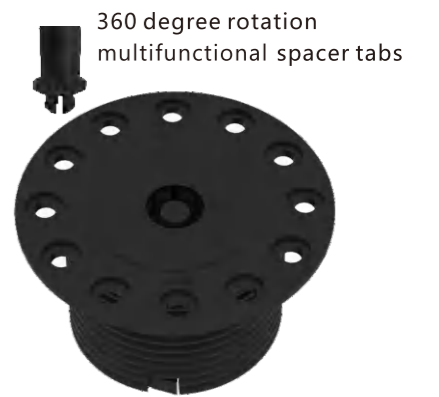
break off the spacer tab to fit different situation.



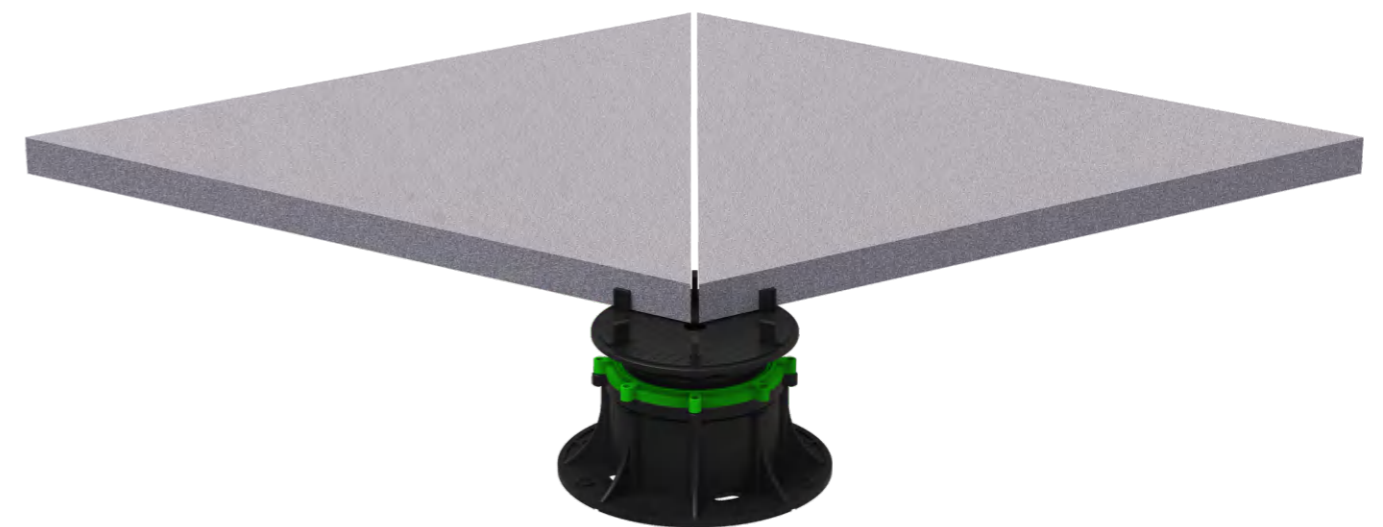
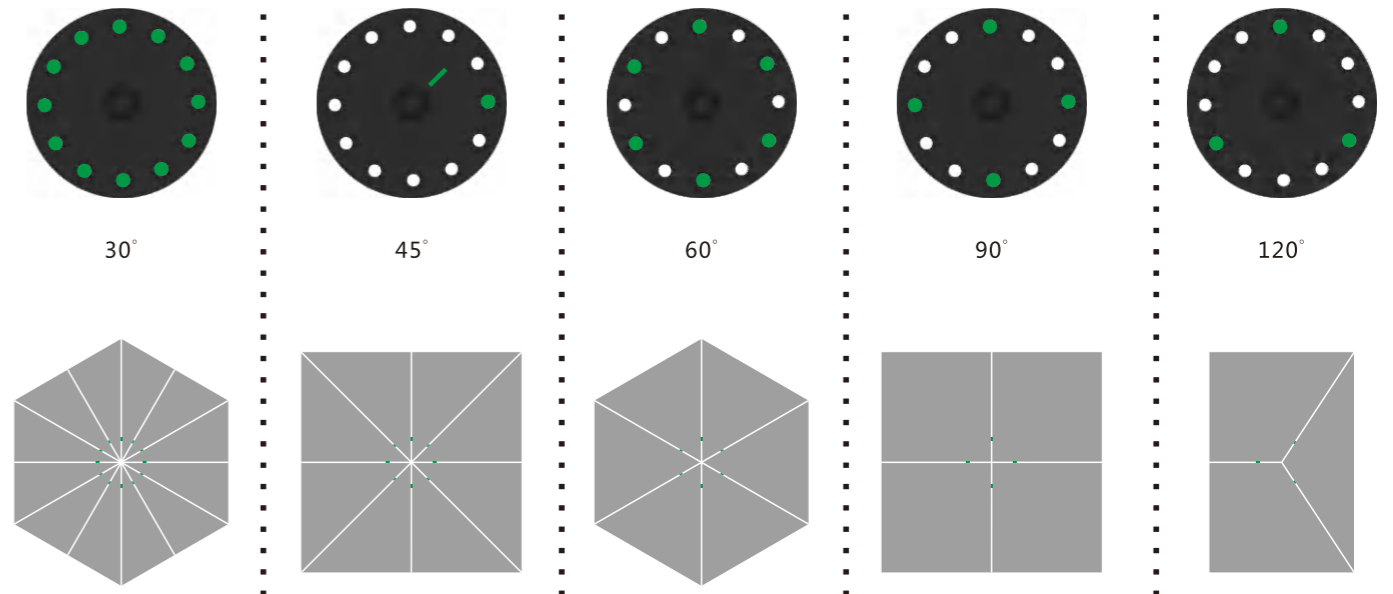
Multifunctional Spacer tabs



2 mm 3.5mm 5 mm 8 mm 10 mm

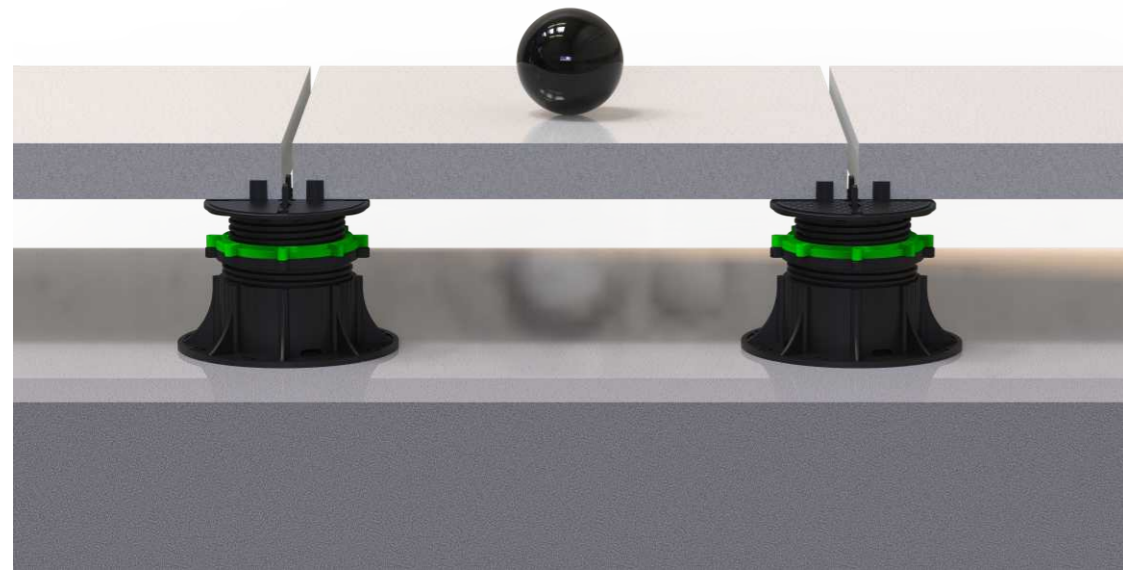
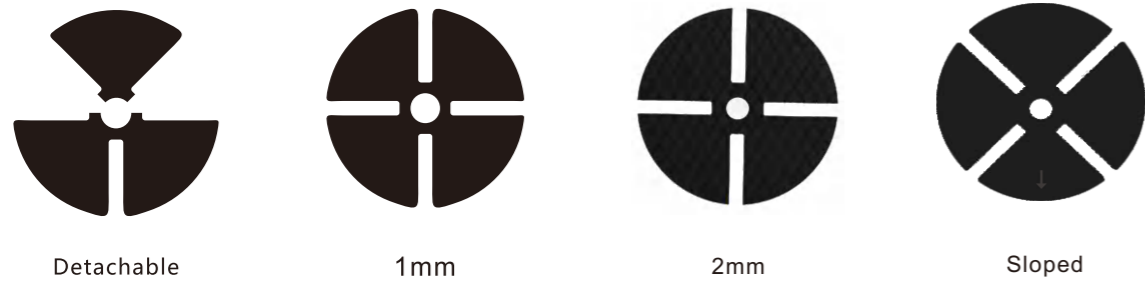


Note: each green spot means one multifunctional spacer tabs



Shim Rubber

A 1mm or 2 mm or sloped shim is detachable.
It anti-slip, absorb noise, and compensates for variations in paver thickness.

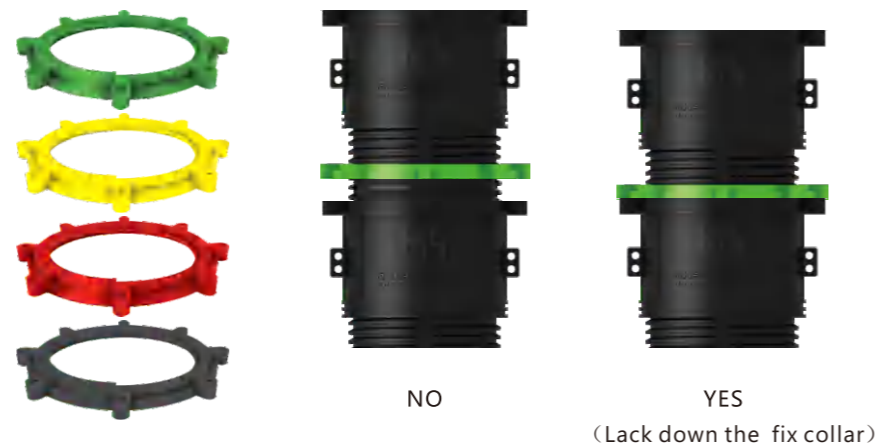


Compensate tile thickness difference

Fix collar

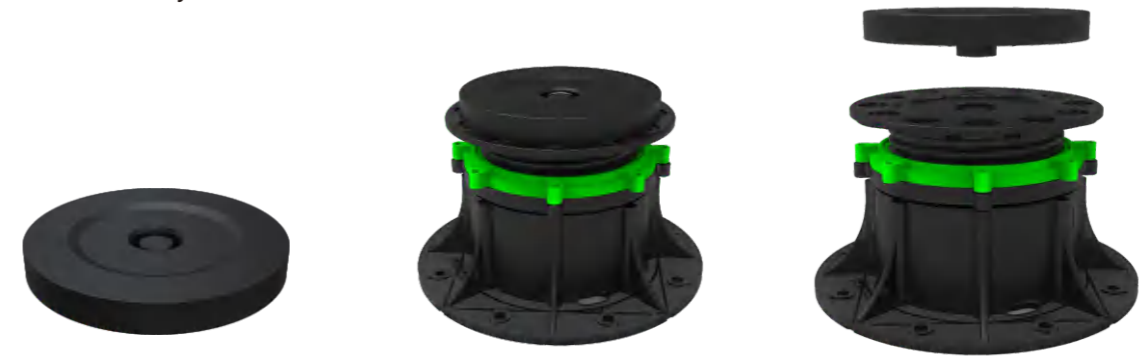
Fix and lock the thread, avoid sway
Color can be customized

Patent : ZL 201420565484.X



15mm extension pad

One basic pedestal+extension pads
Stackable Extension pad, this gives advantage that one size pedestal could reach more height, no need to change another size for height near project.
Fast sell and easy to stock for distributors.



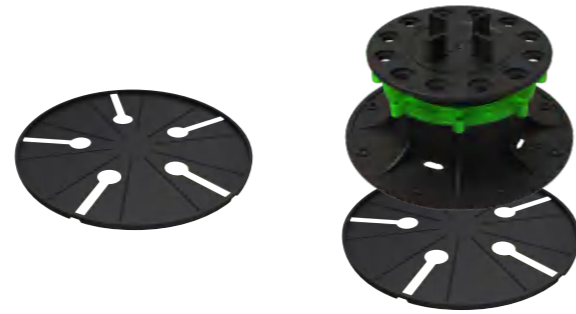
Base Slope Corrector

Rotating the upper disc to compensate 0%-5% slope
Assembled under the base of the pedestal (suitable for pedestal base dia 200mm or 220mm)



Base Rubber Pads

No smell, healthy and eco-friendly, anti-slip, reduce noise, protect water membrane
Assembled under the base of the pedestal
(suitable for pedestal base dia 200mm)



Anti-noise silent base rubber pads

 up to 25 dB

Connecting Rod

When the support reaches 800mm or more, the connecting rod makes the support more fixed. The K type is directly stuck on the K-fix collar. The T type needs to be matched with a big fix collar.



Short connecting rod
(340-500mm suitable for 480-610mm tiles)



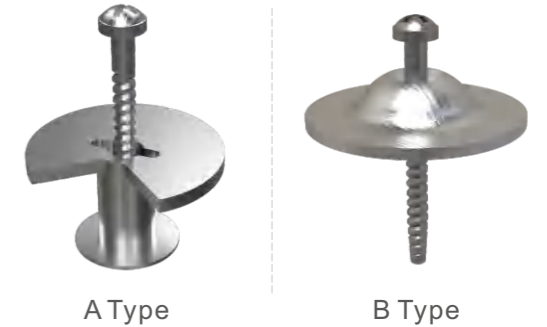
Long connecting rod
(500-750mm suitable for 640-910mm tiles)



Big fix collar

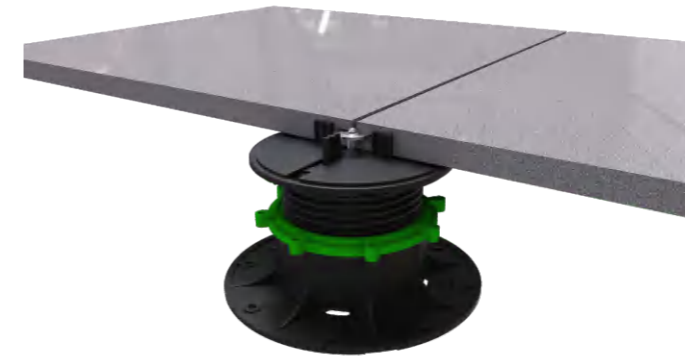


Windproof system



A Type

B Type

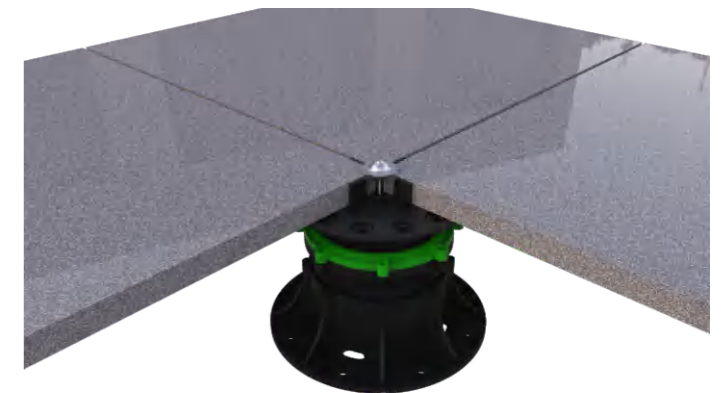


wind proof lock with screw(A Type)

Accessories are perfectly hidden by cutting the stone, being invisible. The flooring maintains its original aesthetic. But cutting the tile also extends the installation time.

wind proof lock with screw(B Type)

By firmly attaching the supports and plates to each other using circular keyholes and spike, the flooring becomes one. As a result the Pedestal System and the Paver anchor to each other to create wind resistance. This method is fast and concise, but the protruding attachment itself will cause uneven floors.



Perimeter Spacer Clips And Side Closure Steel Clips



Perimeter steel clip



Top clip for vertical closure



Bottom clip for vertical closure

Perimeter steel clip



Perimeter spacer clips is made of stainless steel, it is designed to avoid contact between the outdoor tiles and the wall. using these clips ensure a stable floor surface and a straight and elegant perimeter.

Top clip for vertical closure



Bottom clip for vertical closure

Top clip for vertical closure and bottom clip for vertical closure are used for vertical side tile closure. This system consist two types of clips, one assembled on the top of pedestal, another assembled under the base, it creates a firm seat capable of gripping the tiles which is cut to fill the gap, making perfect vertical closure for the terrace.

Self-leveling Pedestal



Self-leveling head for paving tiles
(2mm/3.5mm/5mm)



Self-leveling head for decking joist



Self Levelling pedestals provide our most flexible means of creating a floating floor system on balconies and roofdecks. The heads incorporate a gimbal mechanism which allow a rotational tilt of up to 5°. This can compensate for falls in the sub-grade, or alternatively create a slight fall on the paved surface to direct surface water to the joints.

Joist Cradle

To hold timber joist, composite joist, aluminum or steel support sections joist, wooden beam
Size option: suitable for beam size 20-80mm



single side joist cradle



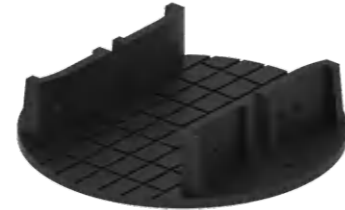
40mm joist cradle



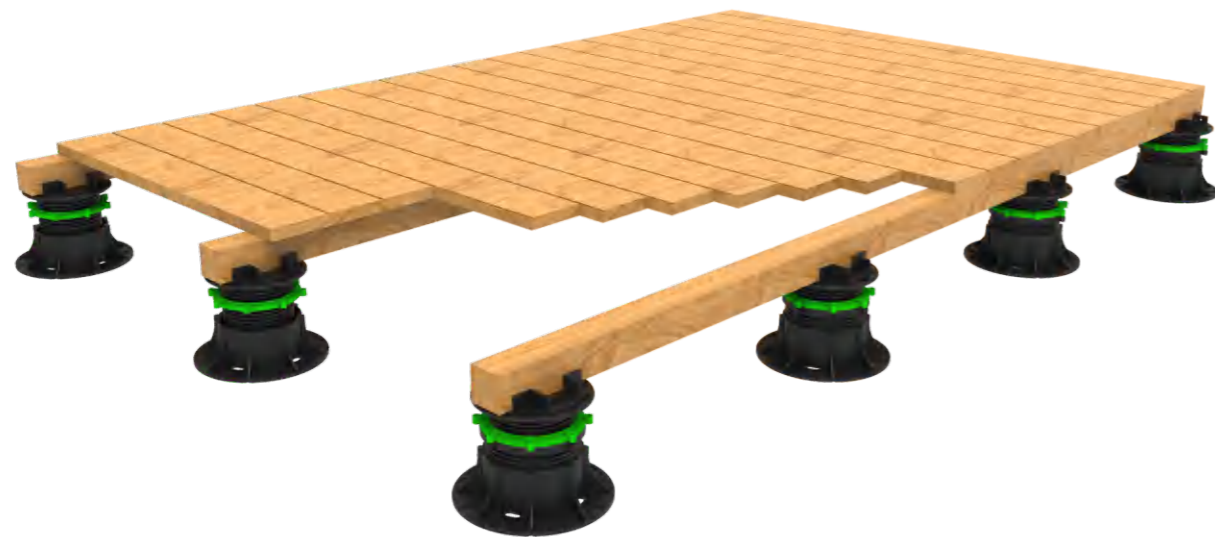
50mm joist cradle



60mm joist cradle

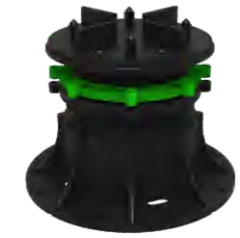


80mm joist cradle



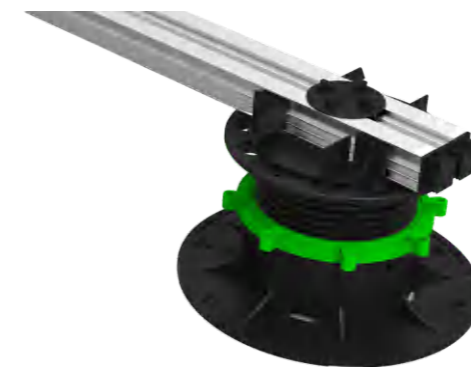
Wood Tile Clip

wood tile clip+wood tiles

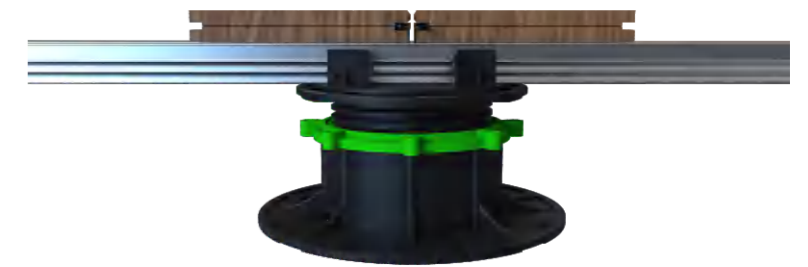


Aluminium Joist And Clip For Aluminium Joist

Aluminium joist size 25x50mm, snap into a special joist cradle firmly, no need screws, can be installed with WPC decking, wood deck, it can also support ceramic tiles, stone tiles, granite tiles when installed with spacer tabs.



Support paving tiles



Support decking boards

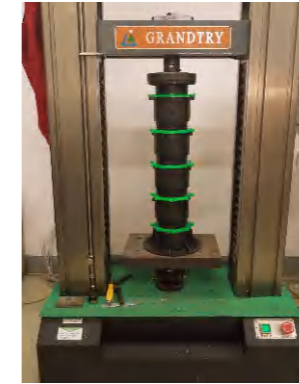
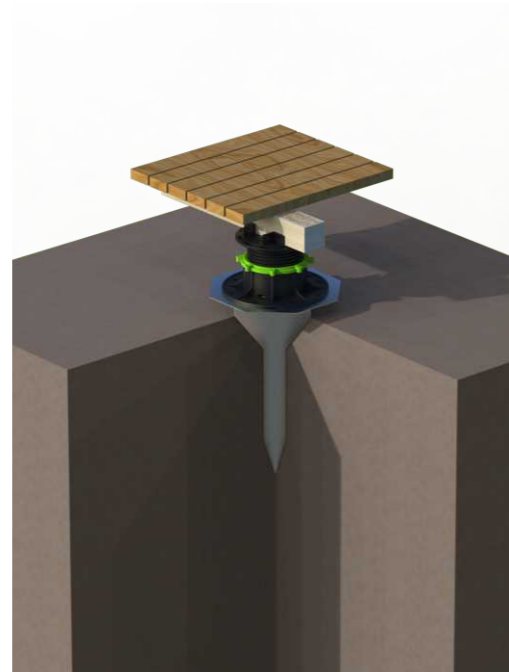
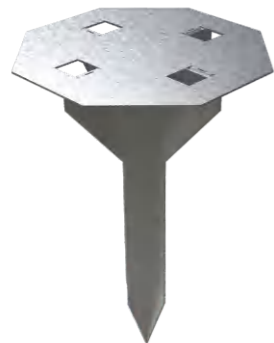
Galvanized Steel Safety Panel

The small holes on the four corners of the galvanized steel safety panel are used to connect spacer tabs of the adjustable pedestal and connect the adjustable into a whole. After placing the stone on it, when the stone breaks, it can prevent people or objects from falling and keep it safe



Moonbay Spike

The Moonbay spike are suitable for sandy soil areas. When the supporter is difficult to stand on the soft sand, the spike can prevent the adjustable pedestal from sinking



Entire

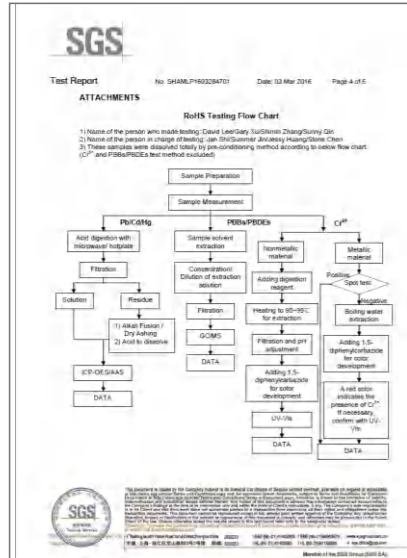


Half



Quarter

Code	Height Range (mm)	Max loading (Kg)			Breaking loading (Kg)		
		Entire	Half	Quarter	Entire	Half	Quarter
MB-FP-01	12.5	1630	1356	1195	2650	2439	1989
MB-FP-02	16	1625	1347	1189	2677	2468	1967
MB-T0	14-19	980	786	620	1350	1162	982
MB-T0-A	19-30	965	798	669	1298	1089	995
MB-T0-B	28-42	955	820	683	1250	1060	965
MB-T0-C	40-65	975	765	652	1325	1136	925
MB-T0-D	65-105	925	735	698	1386	1298	970
MB-T0-E	90-180	920	730	690	1356	1150	968
MB-T0-F	185-320	926	760	685	1365	1159	965
HMB-T1-A	250-370	915	726	650	1265	1120	925
HMB-T2-A	370-560	926	739	625	1290	1129	920
HMB-T3-A	500-760	915	725	630	1285	1090	915
HMB-T4-A	600-930	925	719	626	1129	1125	890
HMB-T5-A	750-1100	910	725	652	1025	1100	860
HMB-T6-A	900-1260	850	710	620	1260	1120	810



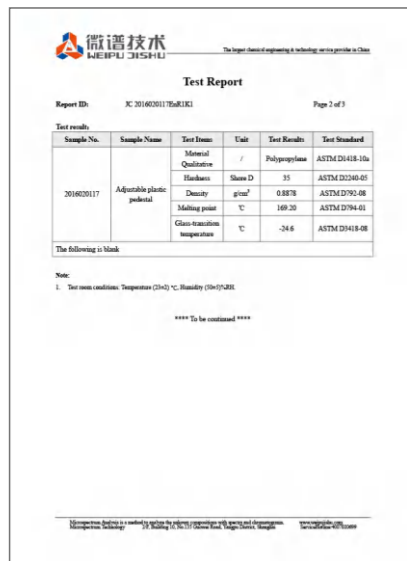
Rohs Report-SGS



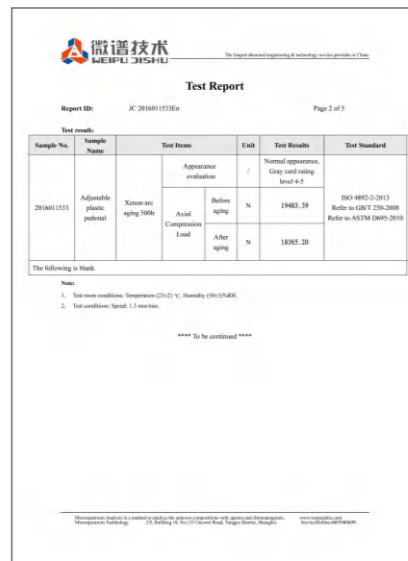
CE Certificate



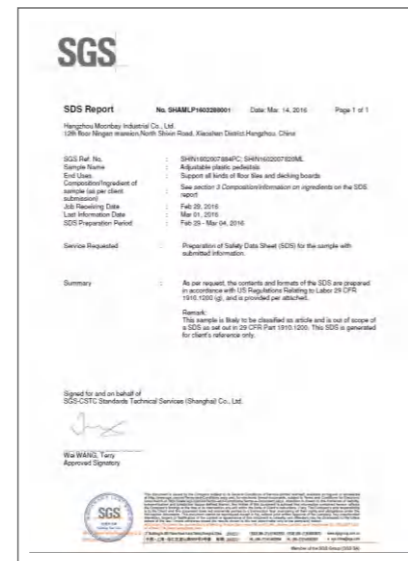
Astm Anti-fire Test



Astm Material Test



Astm Anti-uv Aging Test



Msd Report-SGS

Patent Protected

- ZL 201420566195.1
- ZL 201420565484.X
- ZL 201520013751.7
- ZL 201520011852.0
- ZL 201420564654.2
- ZL 201430364633.1
- ZL 201430364527.3



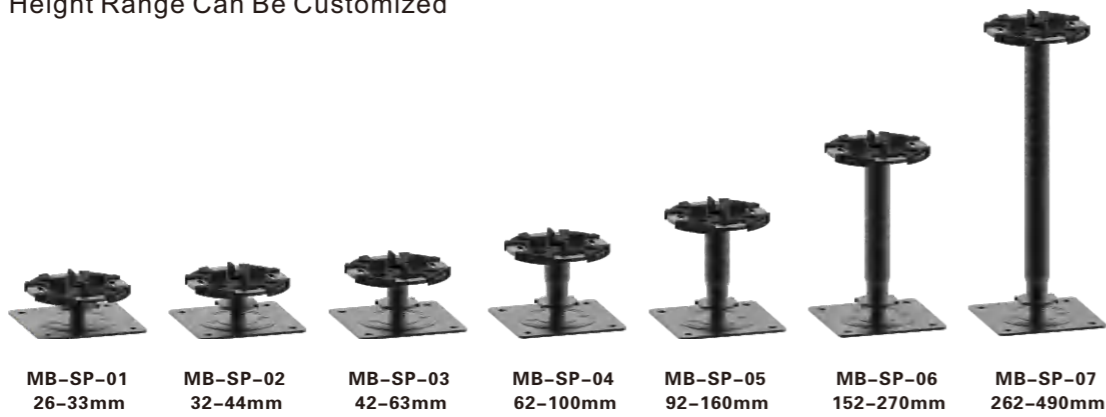
MB-SP Type



MB-SP Type
non combustible steel pedestal for tiles
Class A fireproof

Code	MB-SP-01	MB-SP-02	MB-SP-03	MB-SP-04	MB-SP-05	MB-SP-06	MB-SP-07
Height Range (mm)	26-33	32-44	42-63	62-100	92-160	152-270	262-490

Height Range Can Be Customized



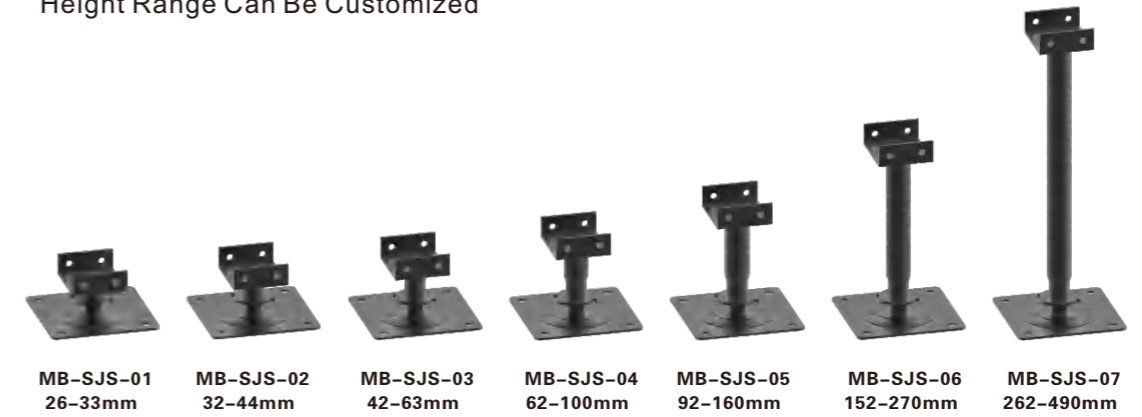
MB-SJS Type



MB-SJS Type
non combustible steel pedestal for decking
Class A fireproof

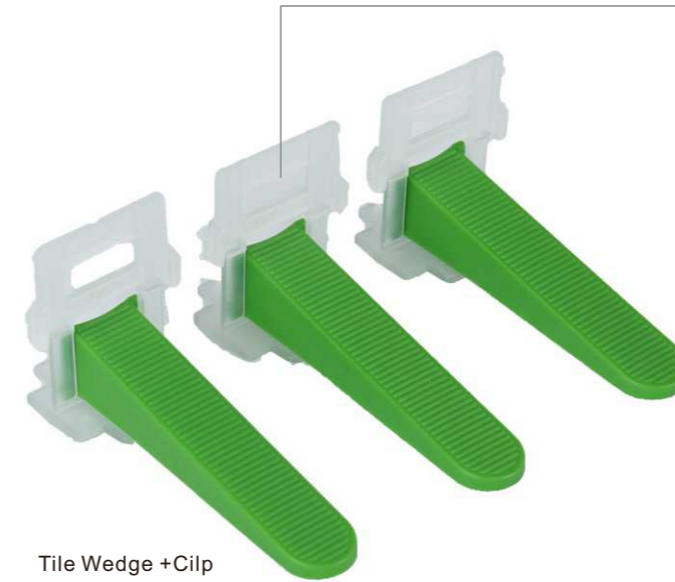
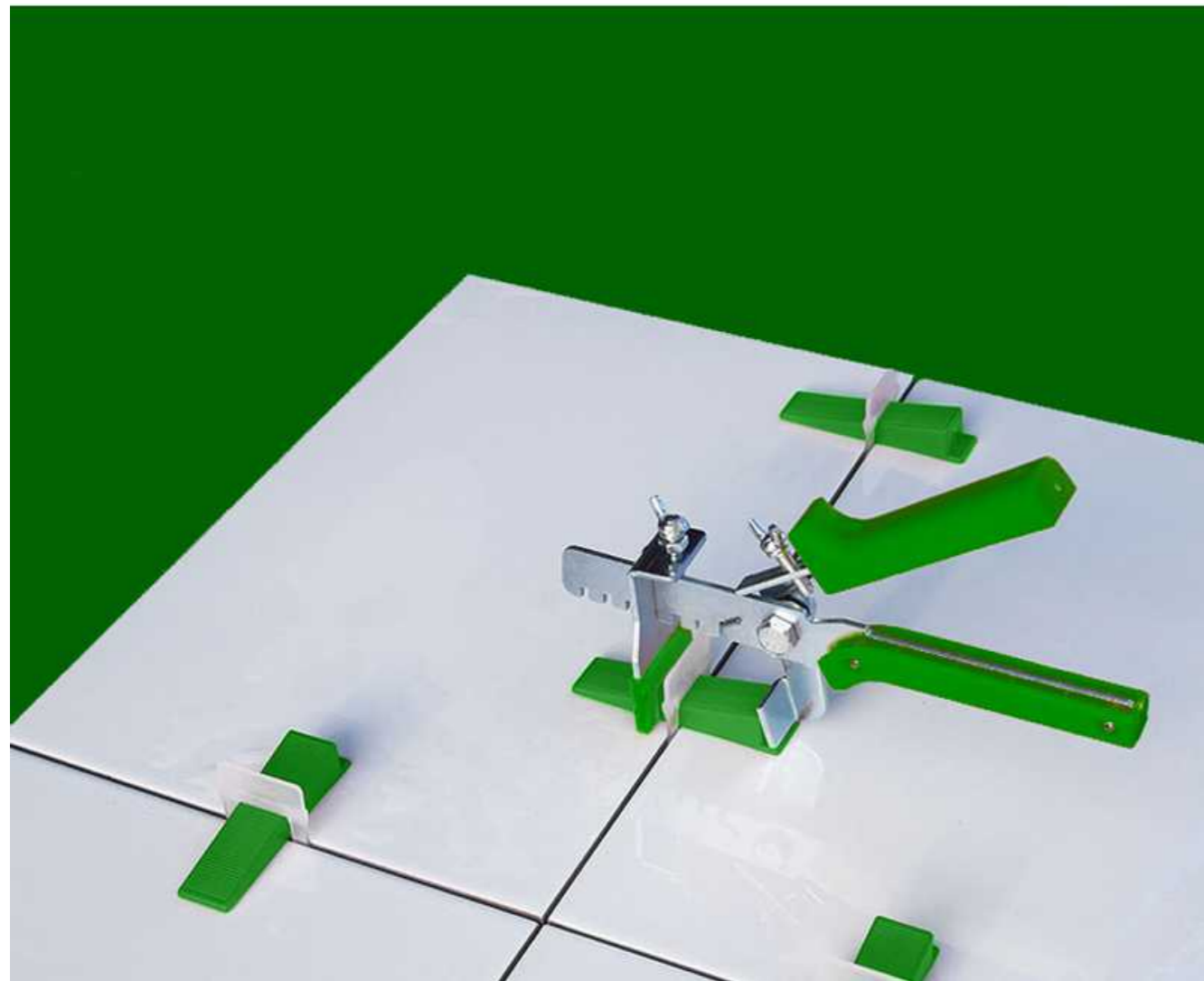
Code	MB-SJS-01	MB-SJS-02	MB-SJS-03	MB-SJS-04	MB-SJS-05	MB-SJS-06	MB-SJS-07
Height Range (mm)	26-33	32-44	42-63	62-100	92-160	152-270	262-490

Height Range Can Be Customized

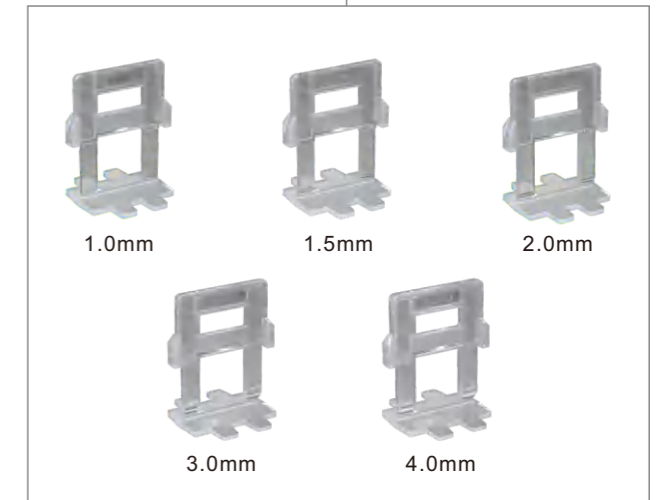


Tile Leveling System

Tile leveling system for floor tilers to ensure parallel joints and perfect leveled tiles. This products are used for precision mounting of tiles. They eliminates all possibilities of lippage between the tiles.



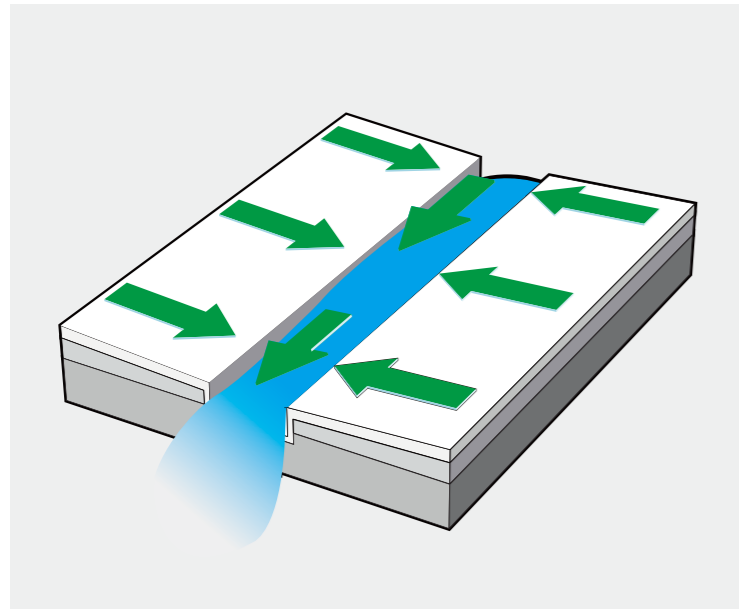
Tile Wedge + Clip



Reusable Tile Leveling System



Plier



Ease Of Assembly

Recyclable

Hydraulic Performance

Chemical Resistance

High Strength

Lightweight

Lockdown

Advantage



Ease Of Assembly

The modular design of Moonbay drain channel is made of HDPE, it is 80% lighter than the traditional concrete channel. This make the assembly and installation fast, easy, saving time and Money.



Recyclable

Moonbay drain channel are made of 100% recyclable plastic material that can be used again in the manufacturing process, therefore protecting the environment and future generations.



Hydraulic Performance

The smooth rounded internal surface of the Moonbay water drainage systems creates higher rates while allowing a self cleaning action thus avoiding the accumulation of silt deposits.



Chemical Resistance

Due to Moonbay's superior Polypropylene construction, it is able to resist most chemical agents, acids, salts, alkaline, fuels, oils, fats, etc.



High Strength

The advanced construction of the moonbay drainage channel gives it greater structural rigidity, protecting it from damage during and after installation.



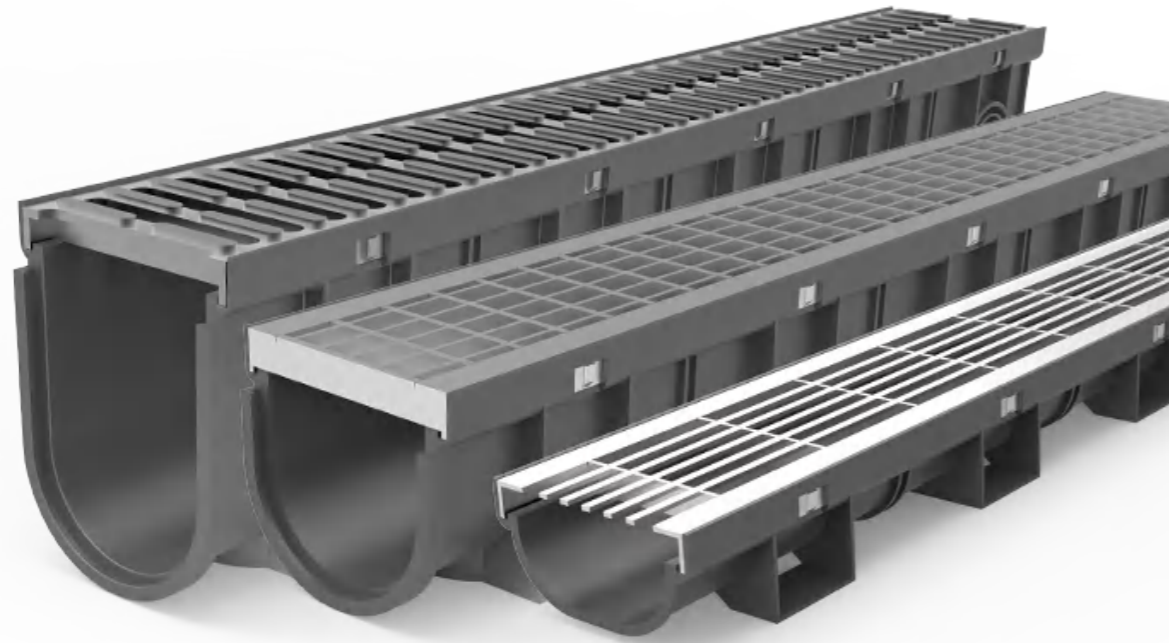
Lightweight

Being manufactured from lightweight material, has the added advantage of being easier th handle, transport, and install.



Lockdown

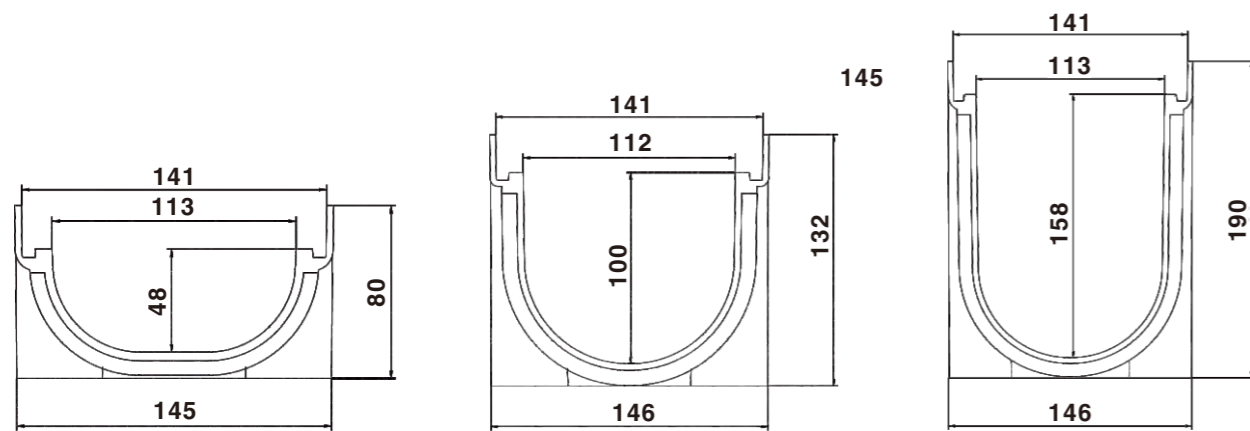
4 point security lockdown for Anti-Theft peace of mind.



ID100 Series(mm)



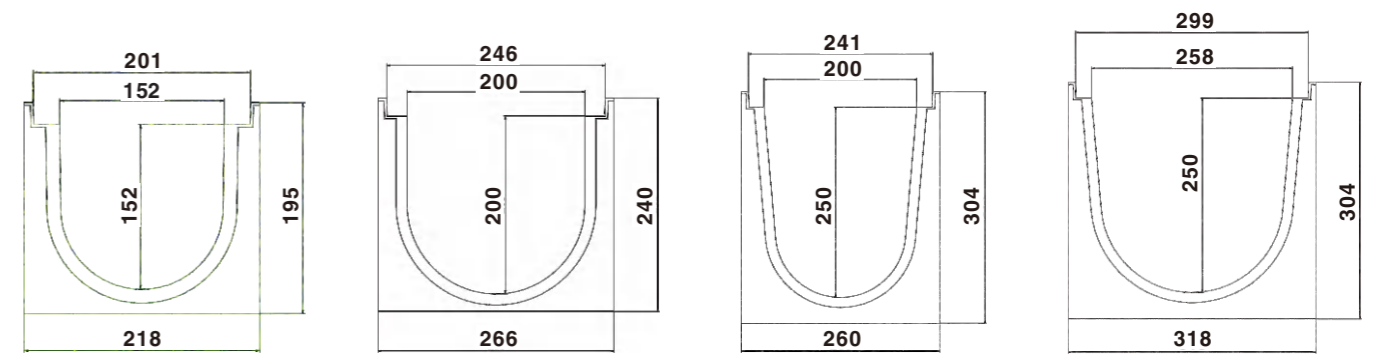
ID 150/200/250 Series(mm)



100x45x1000(mm)

100x100x1000(mm)

100x150x1000(mm)



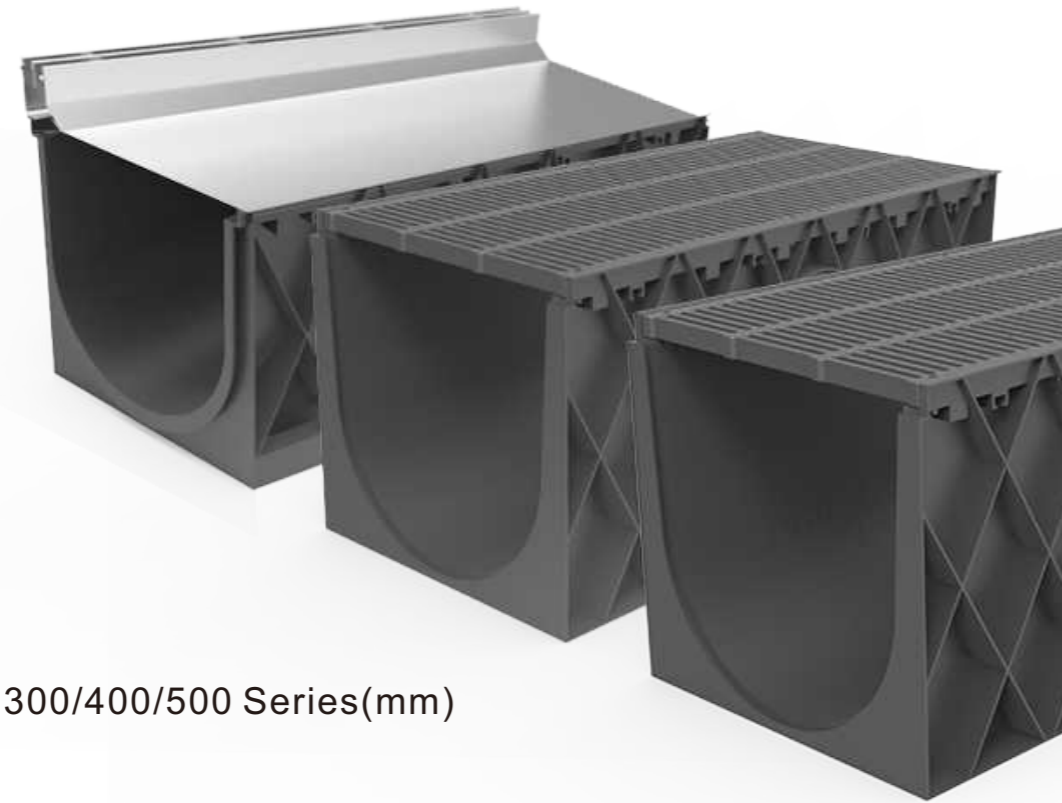
150X150X1000(mm)

200X200X1000(mm)

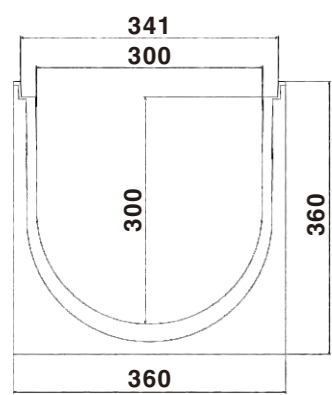
200X250X1000(mm)

250X250X1000(mm)

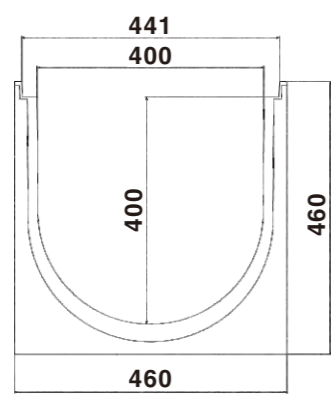
Load Classification



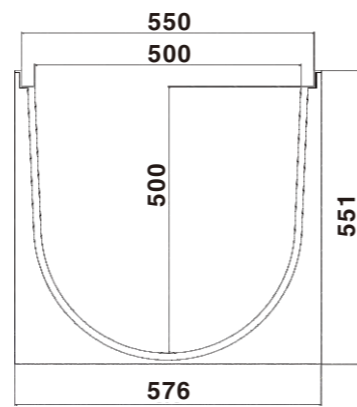
ID 300/400/500 Series(mm)









300X300X1000(mm)



400X400X1000(mm)

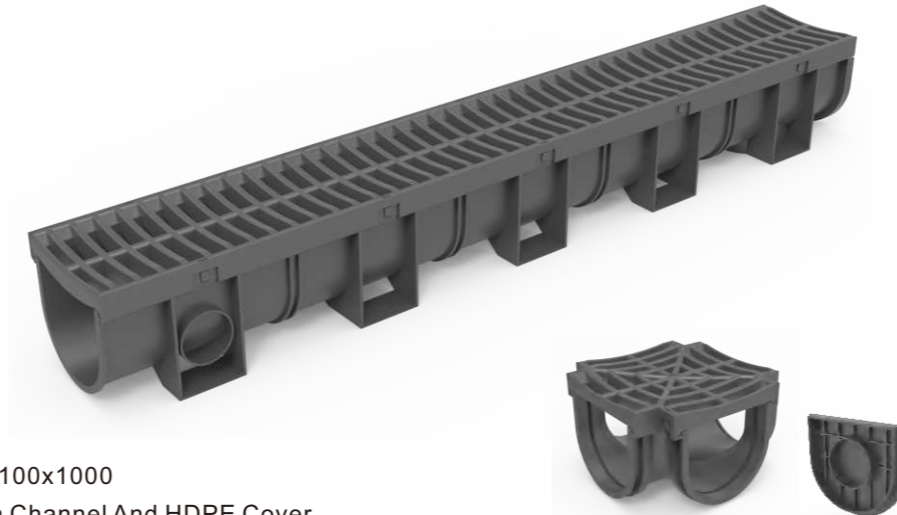


500X500X1000(mm)

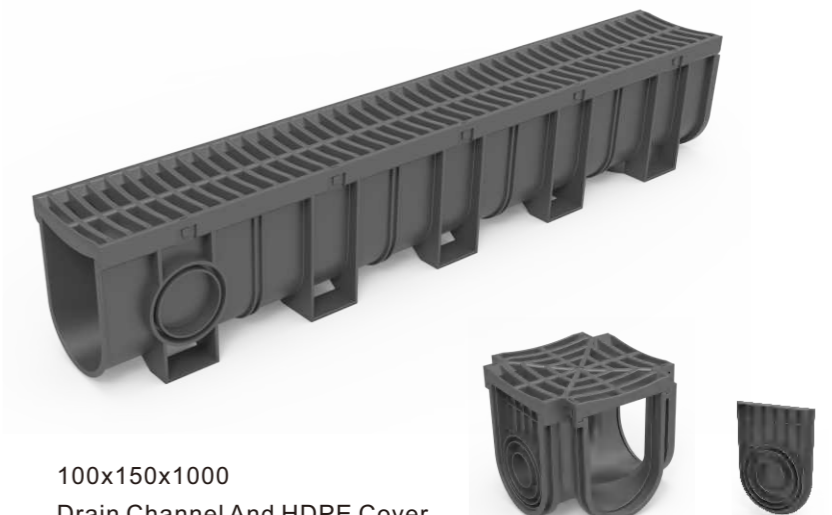
	Class Rating	Load(KN)	Typical Uses
	A	15	Residential and light pedestrian traffic
	B	125	Sidewalks and small private parking lots
	C	250	Parking lots and general commercial areas
	D	400	Trafficked sections of roads and highways
	E	600	Aircraft hangars, industrial areas, gas stations and light commercial forklifts
	F	900	Aircraft runways, military establishments, docks, heavy industrial, heavy fork trucks and very heavy wheel loads



100x45x1000
Drain Channel And HDPE Cover
Four-way Joint And HDPE Cover
End Cap



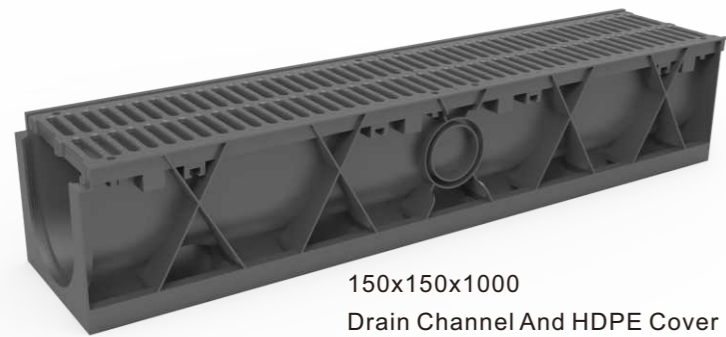
100x100x1000
Drain Channel And HDPE Cover
Four-way Joint And HDPE Cover
End Cap



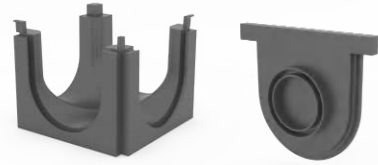
100x150x1000
Drain Channel And HDPE Cover
Four-way Joint And HDPE Cover
End Cap

ID 100 drain channel cover details

Covers							
Name	Stainless steel grate cover	HDPE plastic grate cover	L slot stainless steel cover	T slot stainless steel cover	stainless steel mesh grate cover	galvanized steel mesh grate cover	iron cast cover
Loading	A15	B125	B125/C250/D400	B125/C250/D400	C250/D400	C250/D400	D400
Material	stainless steel/galvanized steel	HDPE/PP	stainless steel	stainless steel	stainless steel	galvanized steel	iron cast
Type	grate cover	grate cover	L slot cover	T slot cover	mesh grate cover	mesh grate cover	grate cover
Note	customized	mold production	customized	customized	customized	customized	mold production



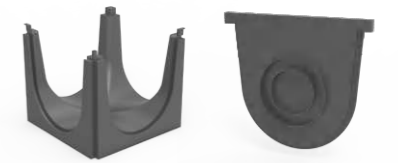
150x150x1000
Drain Channel And HDPE Cover
Four-way Joint And End Cap



200x200x1000
Drain Channel And HDPE Cover
Four-way Joint And End Cap



200x250x1000
Drain Channel And HDPE Cover Plastic
Corner Joint And HDPE Cover
Slim Pit And End Cap



250x250x1000
Drain Channel And HDPE Cover
Four-way Joint And End Cap



ID 150/200/250 drain channel cover details

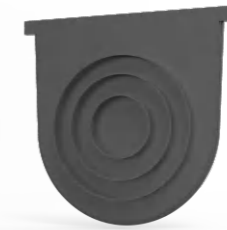
Covers							
Name	Stainless steel grate cover	HDPE plastic grate cover	L slot stainless steel cover	T slot stainless steel cover	stainless steel mesh grate cover	galvanized steel mesh grate cover	iron cast cover
Loading	A15	A15	B125/C250/D400	B125/C250/D400	C250/D400	C250/D400	C250
Material	stainless steel/galvanized steel	HDPE/PP	stainless steel	stainless steel	stainless steel	galvanized steel	iron cast
Type	grate cover	grate cover	L slot cover	T slot cover	mesh grate cover	mesh grate cover	grate cover
Note	customized	mold production	customized	customized	customized	customized	mold production




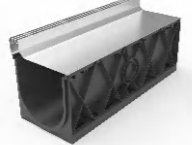
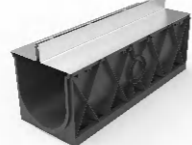

300x300x1000
Drain Channel And HDPE Cover
Four-way Joint And End Cap

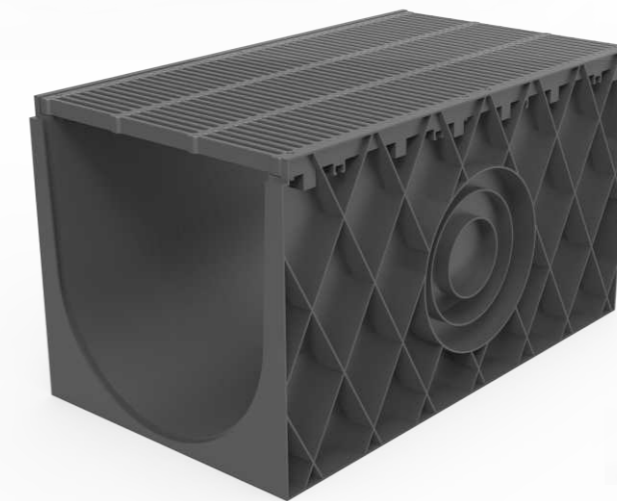


400x400x1000
Drain Channel And HDPE Cover
End Cap



ID 300 drain channel cover details


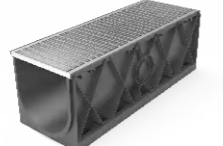

Covers				
Name	HDPE plastic grate cover	L slot stainless steel grate cover	T slot stainless steel cover	U slot stainless steel cover
Loading	A15	B125/C250/D400	B125/C250/D400	B125/C250/D400
Material	HDPE/PP	stainless steel	stainless steel	stainless steel
Type	grate cover	L slot cover	T slot cover	U slot cover
Note	customized	customized	customized	customized

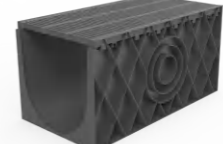


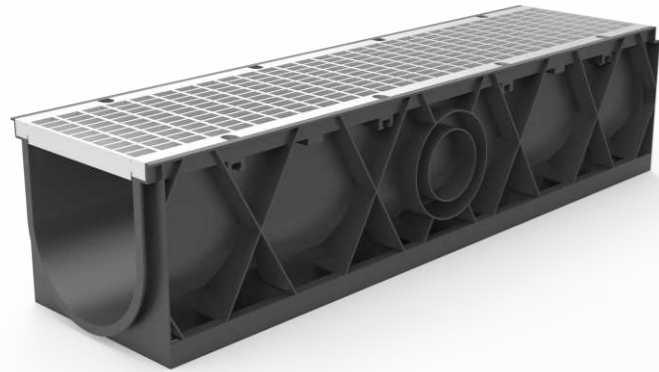
500x500x1000
Drain Channel And HDPE Cover
End Cap



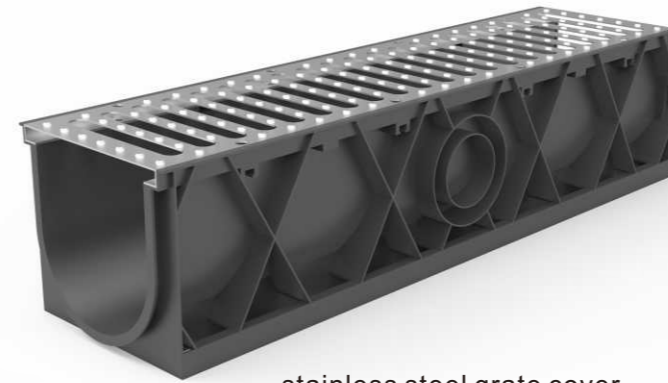
ID 400/500 drain channel cover details

Covers			
Name	stainless steel mesh grate cover	galvanized steel mesh grate cover	iron cast cover
Loading	C250/D400	C250/D400	C250
Material	stainless steel	galvanized steel	iron cast
Type	mesh grate cover	mesh grate cover	grate cover
Note	customized	customized	mold production

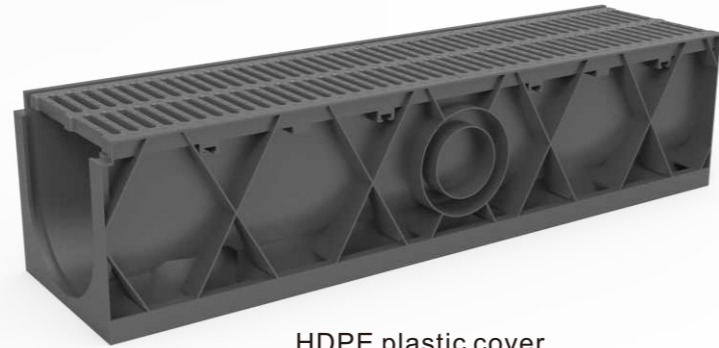
Covers	
Name	HDPE plastic grate cover
Loading	A15
Material	HDPE/PP
Type	grate cover
Note	customized



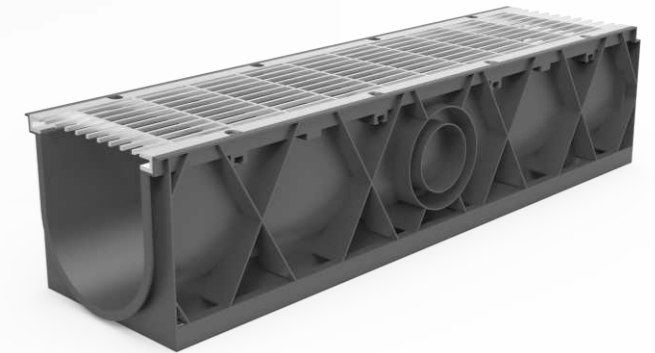
galvanized steel
mesh grate cover



stainless steel grate cover



HDPE plastic cover



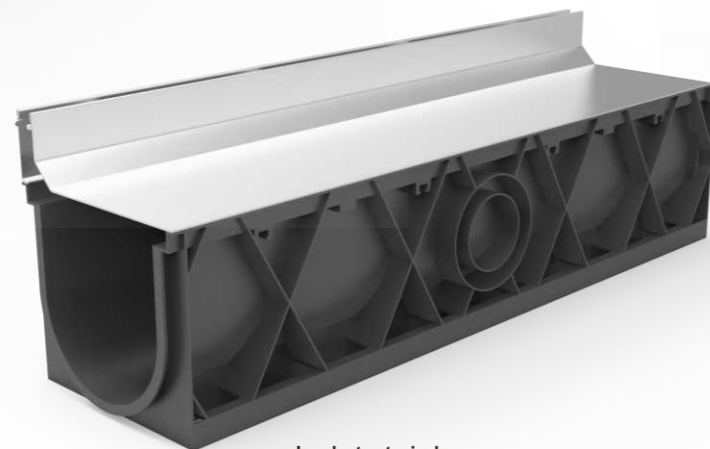
stainless steel mesh
grate cover



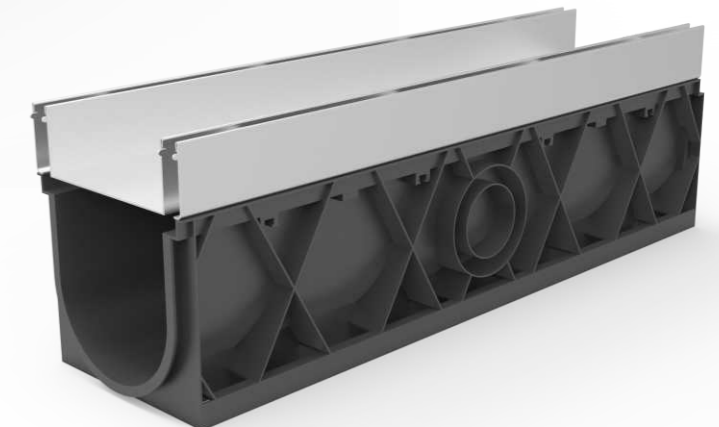
iron cast cover



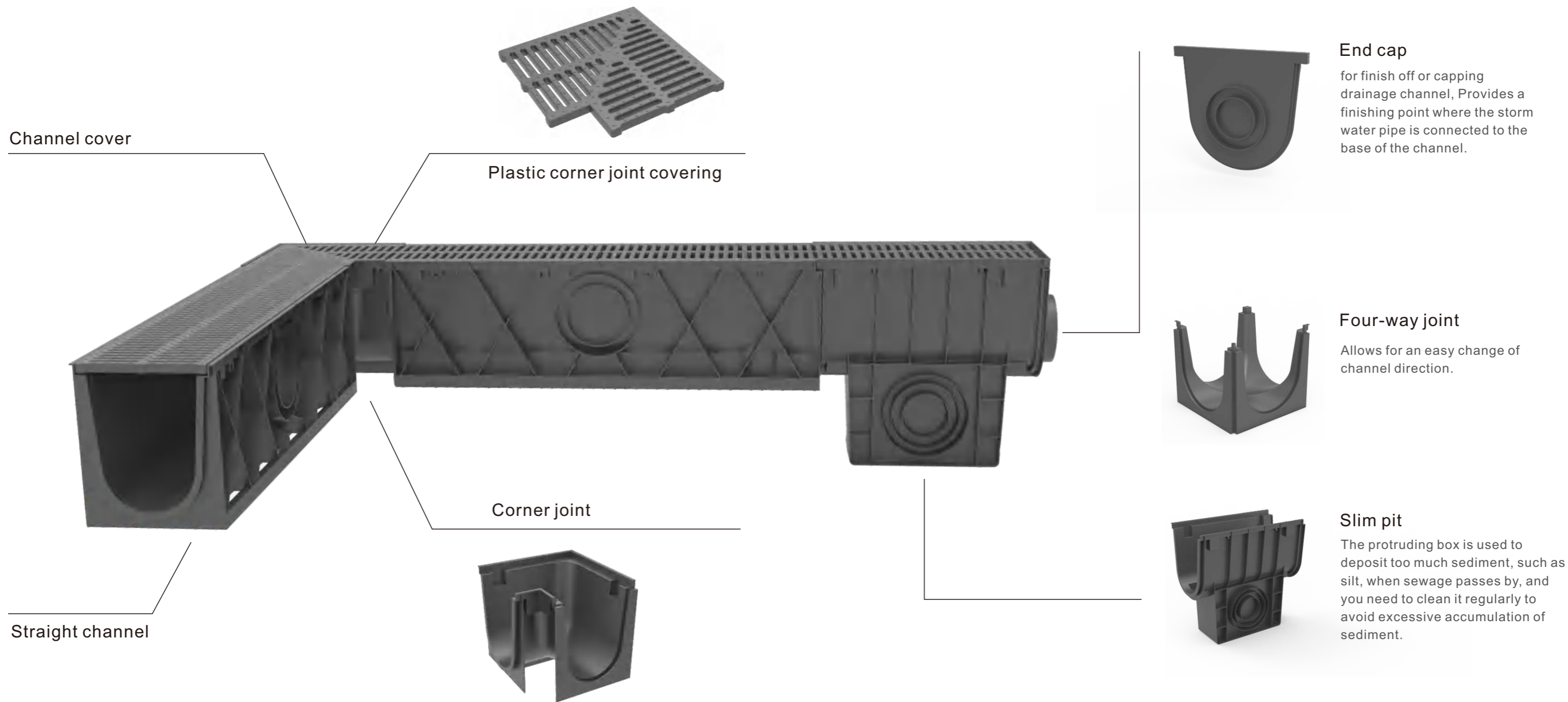
T slot stainless
steel cover



L slot stainless
steel cover



U slot stainless
steel cover



Channel cover

Plastic corner joint covering

Corner joint

Straight channel

End cap

for finish off or capping drainage channel, Provides a finishing point where the storm water pipe is connected to the base of the channel.

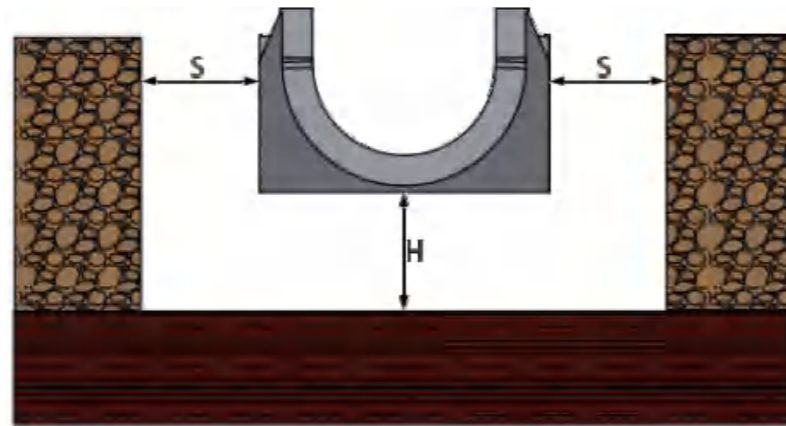
Four-way joint

Allows for an easy change of channel direction.

Slim pit

The protruding box is used to deposit too much sediment, such as silt, when sewage passes by, and you need to clean it regularly to avoid excessive accumulation of sediment.

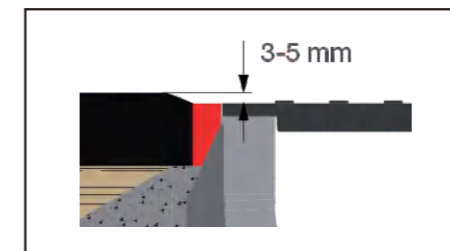
Choose a level area to install your channel drainage. Clear bricks surrounding the installation area.



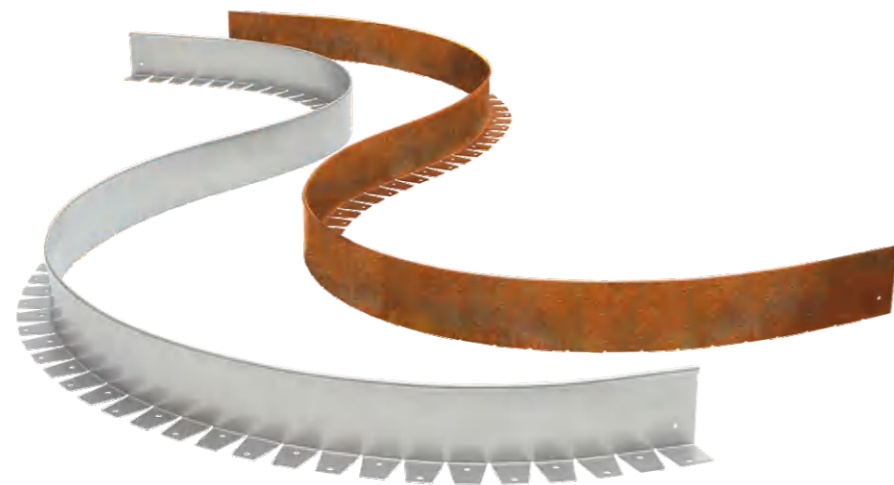
Fill the trench with concrete and level off with enough clearance for the channels. For vertical outlets, remove a knockout to install the outlet and leafguard accessories. Install end caps on the end of the channels. Channels are connected by vertically sliding them into place. Channels can easily be cut to size. Lay drain on a bed of concrete.



Dig trench to accommodate channel and lay 50mm(min) bed of concrete. Mark finishing height with fixed line 3mm below final surface.



Refill the trench and reinstall the surface surrounding the channels. Install the drain channel cover to complete the installation.



Stainless steel edge system

Stainless steel edge system is stronger than aluminium and traditional edging materials. It is also high strength, good quality, weather resistance and durability.



Multifunctional edge system

Create the shapes you want, from intricate curves to endless straight lines, even right angle bends without a cut and join. At the same time, it is cost-effective, wide range of applications, installation is very convenient.

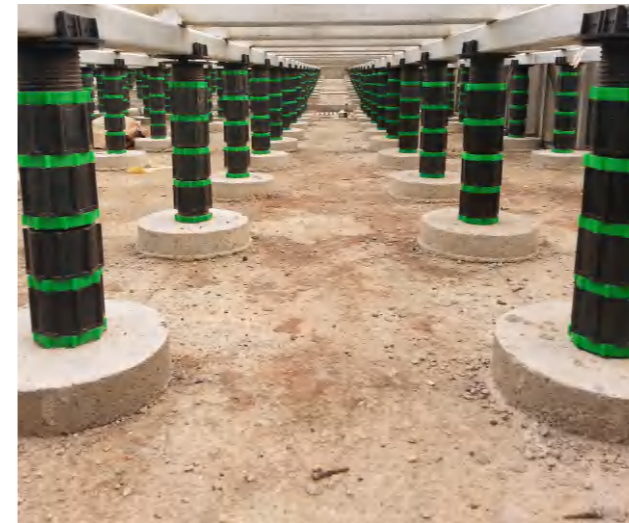


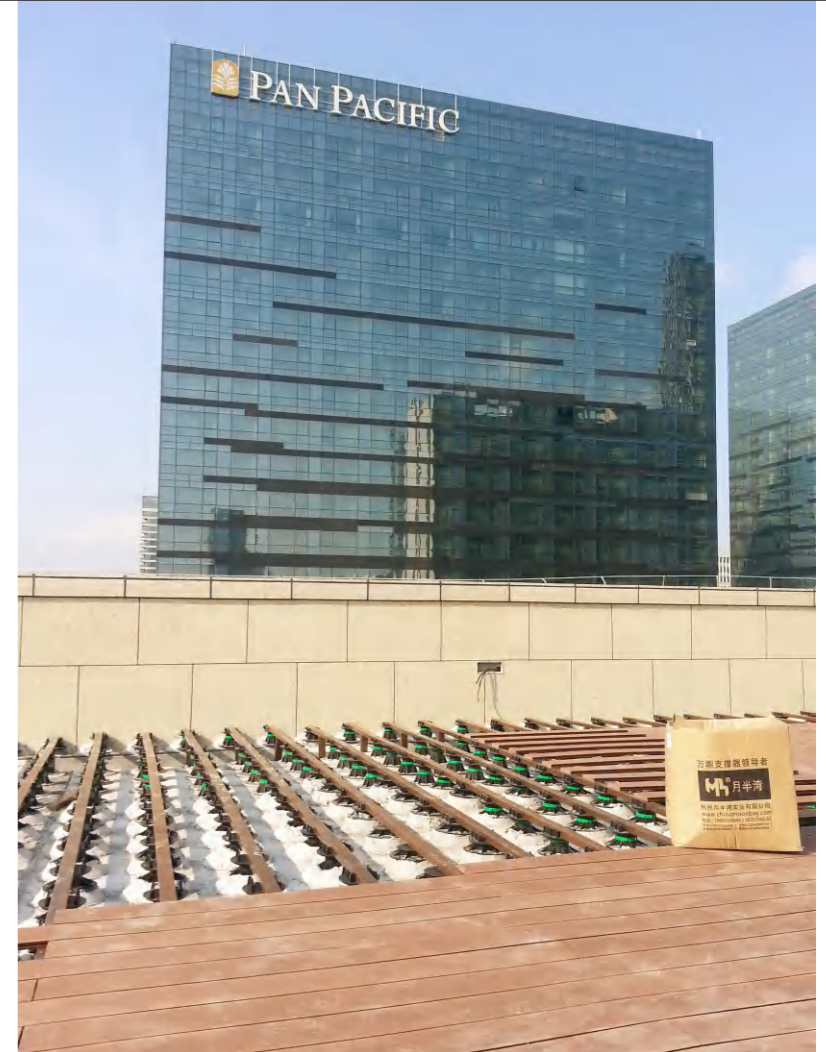
Garden edge system.

Plastic materials are cheaper than other edge system. The plastic edge is light-weight, highly flexible and therefore easy to install in the most intricate of landscape designs.

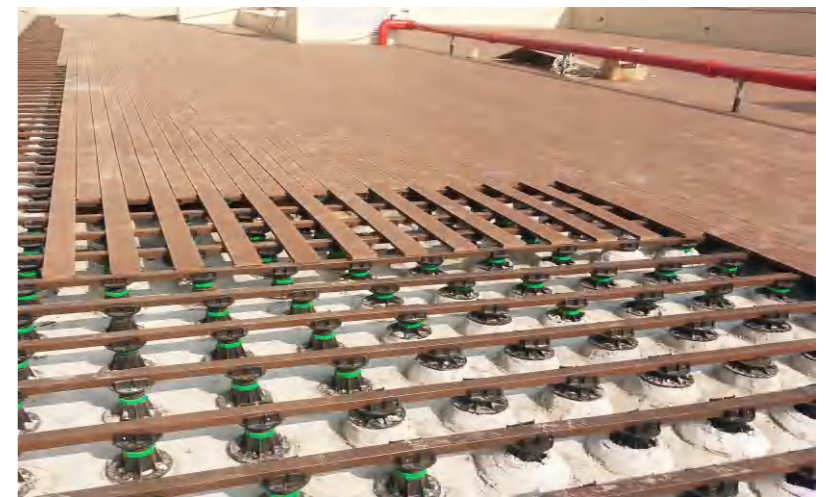


Guangzhou BaiTianE Hotel





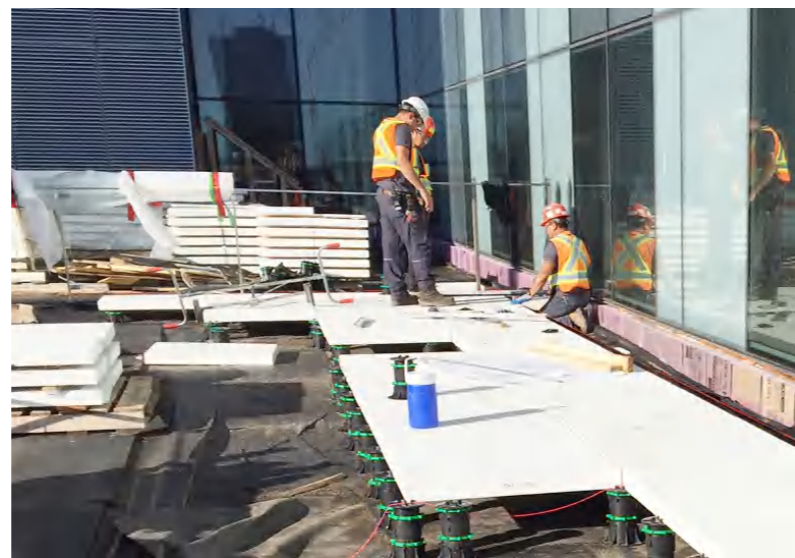
Ningbo Estern City





Oosten-New York

Consisting of 216 units and encompassing an entire block, Oosten makes a dramatic statement in South Williamsburg. The building's facade was designed in collaboration with Think Architecture.



ChuM Building-Montreal



Germany Resort -Korea





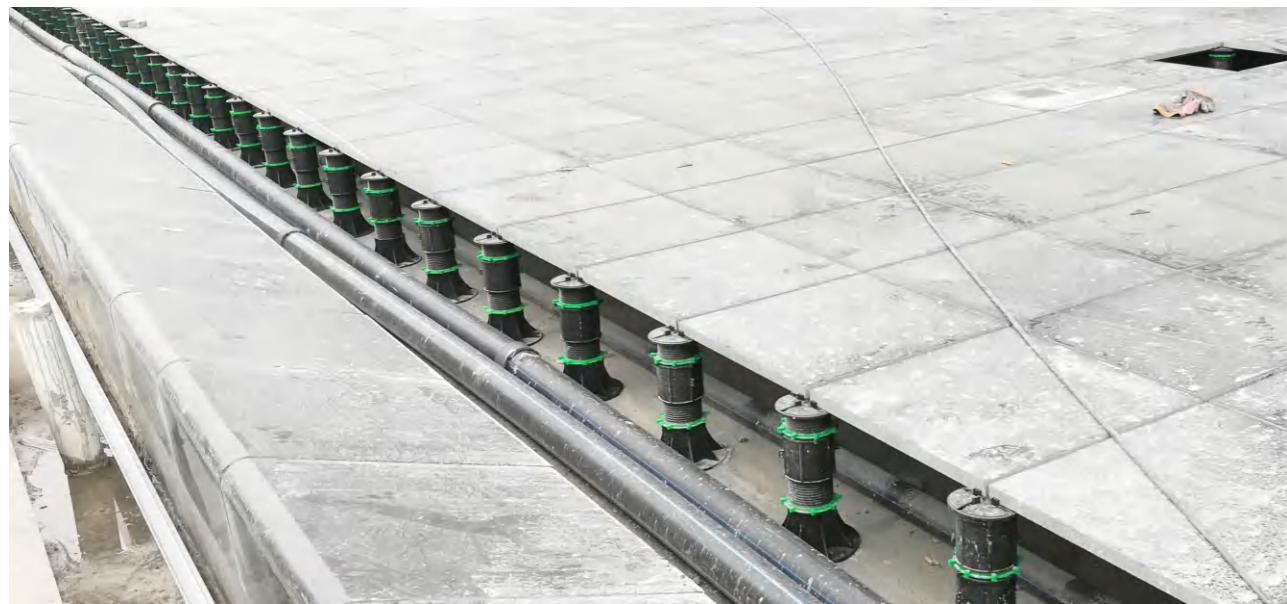
Bainbridge Island Waterfront Remodel-USA



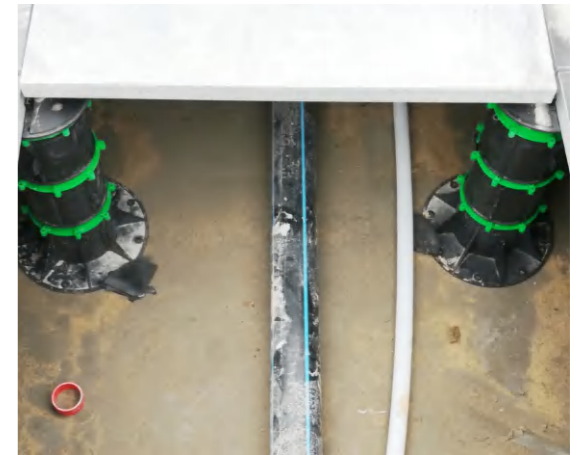


Madison Avenue Lofts-Canada





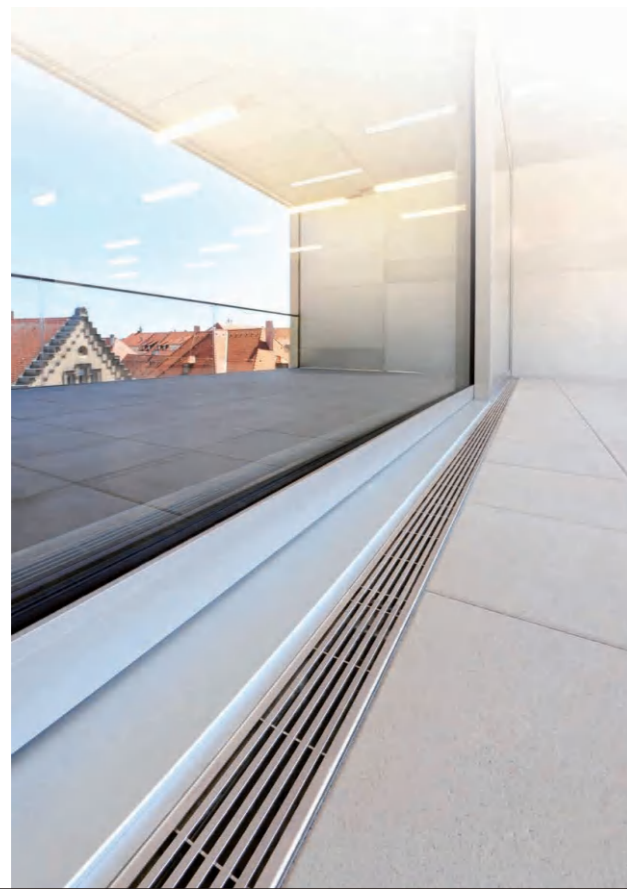
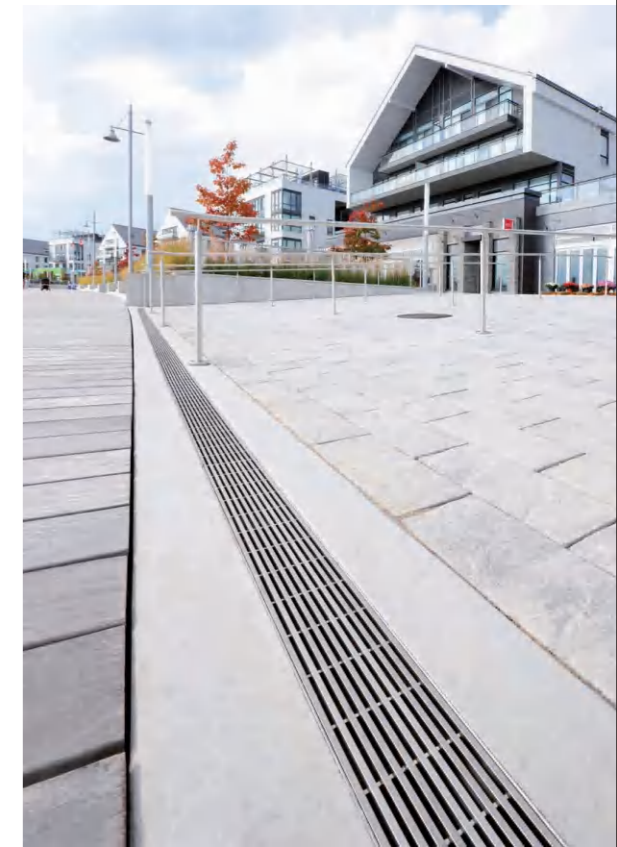
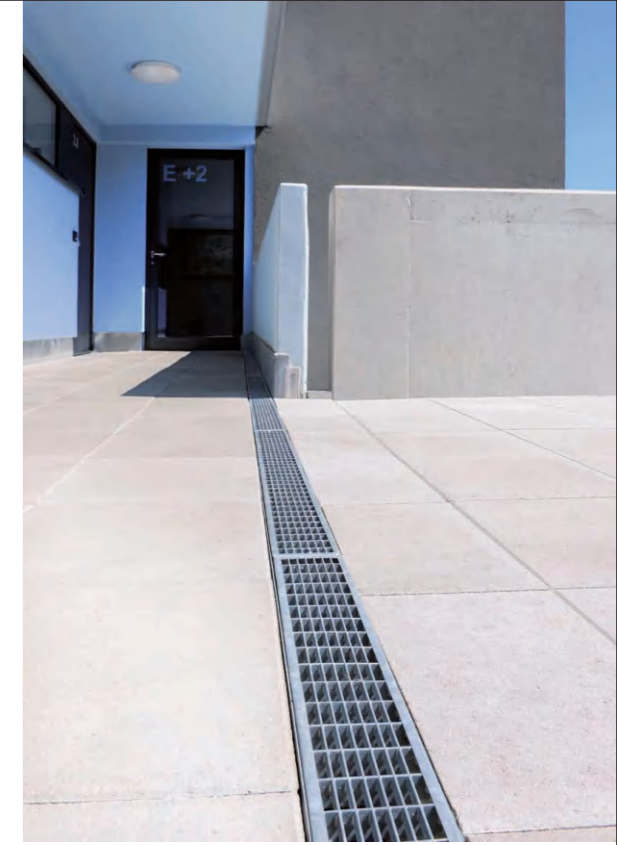
Optics Valley Center





Technology Innovation Center - Hangzhou

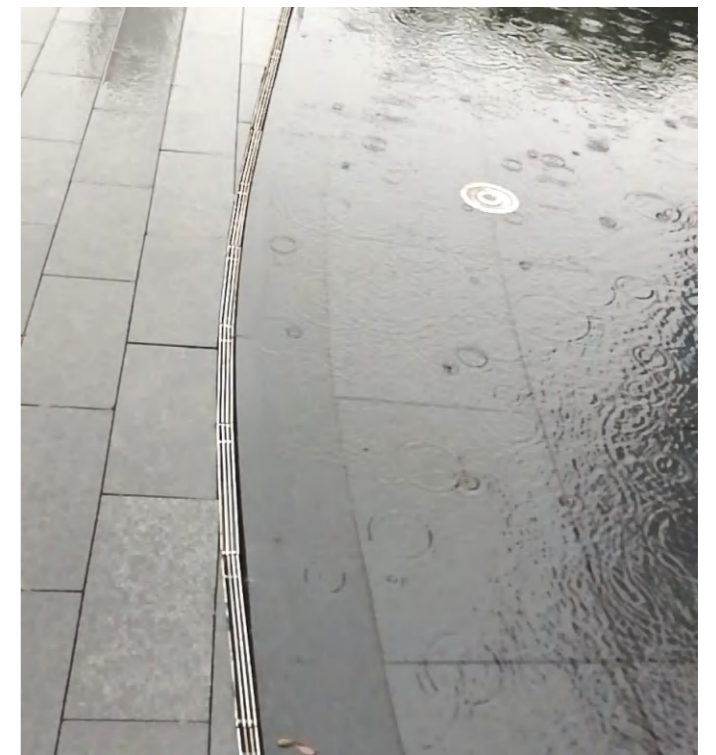




Wude International Plaza-Jiaxing

Nanchang Engineering University-Jiangxi

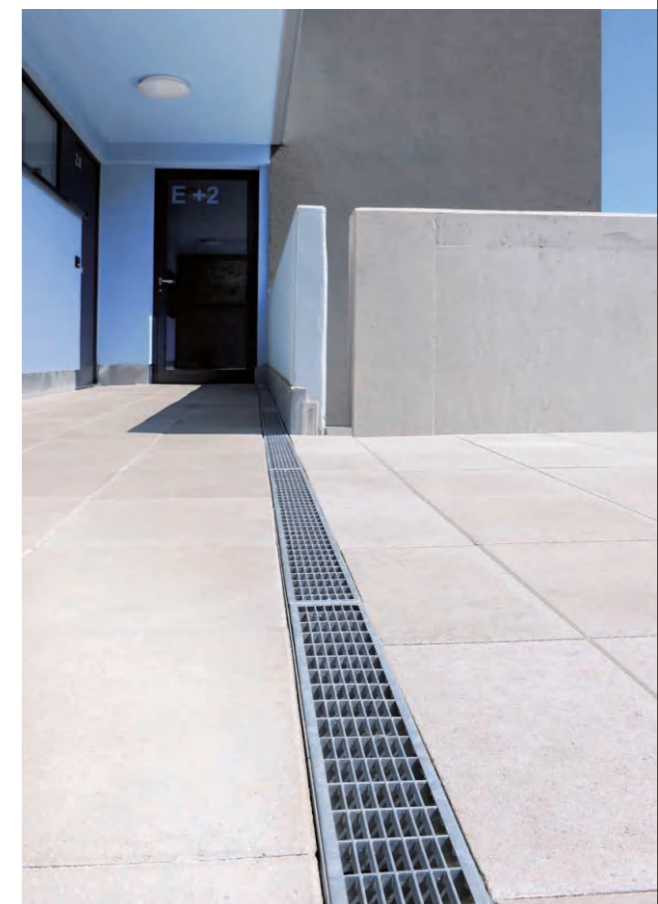




Zhongguancun Innovation Research Institute-Beijing



Jiuyueing square -zhejiang





Wangjiao Square



Tianyuan Middle School-Hangzhou

